



FALLEN FOOTWEAR
FALL 2021



TONY CERVANTES
PHOTO: WILLO

**FALLEN REPRESENTS THE
DETERMINATION AND PERSEVERANCE IT
TAKES TO RISE ABOVE YOUR LIMITS**

**FALLEN FOOTWEAR
IS DESIGNED, TESTED, & DESTROYED BY
OUR TEAM TO ENSURE QUALITY
AND DURABILITY**





FOOTWEAR

PHOENIX	08
PATRIOT	11
THE FIEND - ELLIOT SLOAN PRO MODEL	15
PATRIOT VULC	18
BOMBER C03	21
BOMBER	23
THE EASY	27
TROOPER - CHRIS COLE PRO MODEL	30
RIPPER - CHRIS COLE PRO MODEL	32
T-GUN - TOMMY SANDOVAL PRO MODEL	34
THE GOAT	37
THE LOC - TONY CERVANTES PRO MODEL	40
PATRIOT YOUTH	42

APPAREL

T-SHIRTS	44
SIGNATURE APPAREL	48
HOODIES	51
JACKETS	54
YOUTH APPAREL	56

HATS

59

BACKPACKS

62

SOCKS

64

FOOTWEAR OVERVIEW

68

STICKERS

70



TONY CERVANTES
PHOTO:HODGE

TECH FEATURES



IMPACT FOAM II

THE INSOLE TECHNOLOGY THAT WE DESIGNED IN ORDER TO GIVE YOU THE HIGHEST QUALITY STANDARD FOR ALL OF THE SHOE'S IN OUR LINEUP. THE BOTTOM "BEE PANEL" DESIGN GIVES YOU EXTRA AIR INSIDE OF THE SHOE WHICH MAKES IT MORE BREATHABLE AND ALSO ADDS MUCH MORE COMFORT.



FLX-OLGY

FLX-OLGY FOOTWEAR CONSTRUCTION USES A LIGHTWEIGHT TAPERED EVA MIDSOLE WHICH PROVIDES CUSHIONING FOR THE HEEL AREA WHILE GIVING MAXIMUM BOARD FEEL, CONTROL AND FLEXIBILITY TO THE FOREFOOT. THIS CONSTRUCTION IS DESIGNED TO BE LIGHTWEIGHT AND GIVE A SIMILAR FEEL TO A VULCANIZED OUTSOLE WHILE PROVIDING THE COMFORT AND DURABILITY OF A CUPSOLE.



HEEL DRAG REINFORCEMENT

REINFORCED RUBBER ON HEEL TO RESIST HEEL WEAR AND IMPROVE DURABILITY.



TRUE FIT

IN ORDER TO CREATE A SNUG FORM FIT WE UTILIZED A WIDER, SOFTER, ELASTIC TONGUE STRAP. THIS FEATURE ADDS COMFORT AND SUPPORT AROUND THE INSTEP AREA OF THE FOOT.



VEGAN

WE ARE PROUD TO CATER TO THOSE WHO FOLLOW A VEGAN LIFESTYLE. WHEN YOU SEE THIS ICON THIS MEANS THIS PRODUCT IS MADE OUT OF 100% ANIMAL FRIENDLY MATERIALS.



REISSUE

THIS ICON INDICATES THE RELAUNCH OF AN ORIGINAL FALLEN MODEL WITH THE SAME DESIGN, QUALITY AND DURABILITY FROM A PREVIOUS LINE.



STAPLE

THESE ARE THE MODELS THAT MAKE US FALLEN AND THEREFORE WILL ALWAYS REMAIN IN OUR PRODUCT LINEUP.



CHRIS COLE
PHOTO:HODGE

VULCANIZED

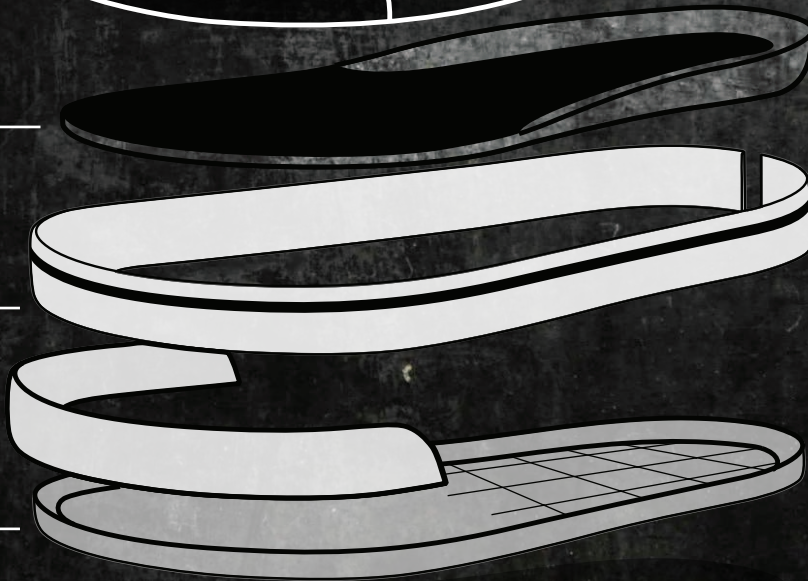
MORE GRIP
MORE BOARD FEEL



IMPACT
FOAM

VULCANIZED
CONSTRUCTION

HDR
HEEL DRAG REINFORCEMENT



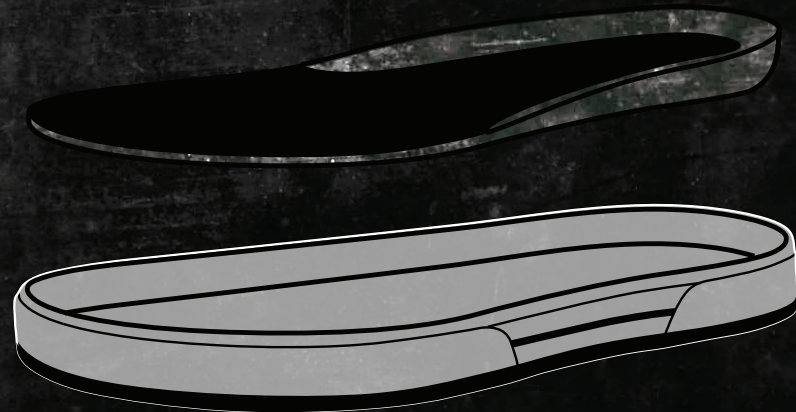
CUPSOLE

MORE DURABLE
MORE COMFORT



TRUEFIT

IMPACT
FOAM



IMPACT II FOAM II

PU LONGER LASTING IMPACT CUSHIONING
SOFTER, MORE COMFORTABLE FEEL
BEE PANEL BOTTOM DESIGN
MORE AIRFLOW CREATES GREATER COMFORT
MAXIMUM BOARD FEEL
40 DEGREES HARDNESS



WE'RE HAPPY TO INTRODUCE OUR BRAND NEW "IMPACT FOAM 2" INSOLE TECHNOLOGY THAT WE DESIGNED IN ORDER TO GIVE YOU THE HIGHEST QUALITY STANDARD FOR ALL OF THE SHOE'S IN OUR LINEUP. THE BOTTOM "BEE PANEL" DESIGN GIVES YOU EXTRA AIR INSIDE OF THE SHOE WHICH MAKES IT MORE BREATHABLE AND ALSO ADDS MUCH MORE COMFORT. OUR GOALS ARE ALWAYS TO MAXIMIZE YOUR BOARD FEEL WHILE SIMULTANEOUSLY CREATING A MUCH MORE COMFORTABLE SHOE THAT WILL LAST LONGER, AND HELP YOU PUSH YOUR OWN INDIVIDUAL LIMITS.



PHOENIX

PHOENIX

THE PHOENIX HAS MAINTAINED THE ORIGINAL DESIGN WITH SLIGHT MODIFICATIONS. A FAN FAVORITE THIS VULCANIZED CONSTRUCTION SHOE IS READY TO GO OUT OF THE BOX. WITH IMPACT FOAM II TECHNOLOGY (SPECIAL FORMULA FOR HIGH IMPACT AND COMFORT) AND HEEL DRAG (EXTRA RUBBER HEEL REINFORCEMENT TO IMPROVE DURABILITY)

FALL '21 | 



BLACK / RED  FMK1ZA01
SUEDE / POLYESTER / VULCANIZED



COLOR MIX  FMK1ZA02
SUEDE / CANVAS / VULCANIZED



CINNAMON  FMK1ZA03
SUEDE / VULCANIZED



 BLACK / WHITE / BLACK  FMT1ZA08
SUEDE / CANVAS / VULCANIZED





ENCINITAS
CIVIC CENTER

50th ANNIVERSARY

PATRIOT



PATRIOT

THE PATRIOT ADDS TO THE DESIGN HERITAGE OF THE CLASSIC FALLEN LOOK AND FEEL. A COMFORTABLE CUPSOLE DESIGNED TO HAVE MORE PROTECTION FOR SKATEBOARDING. THE UPGRADED PATRIOT NOW OFFERS A FLX TECHNOLOGY ON THE SOLEPLATE THAT ALLOWS FOR MORE DURABILITY AND COMFORT AND A TRUE FIT FEEL THAT HOLDS THE TONGUE IN THE SAME PLACE AT ALL TIMES.

FALL '21 | 



BLACK / WHITE II  FMK1ZA04
SUEDE / CUPSOLE



BLACK / GOLD  FMK1ZA05
SUEDE / CANVAS / CUPSOLE



BLACK / RED STRIPES  FMK1ZA06
SUEDE / CANVAS / CUPSOLE



PLUM  FMK1ZA07
SUEDE / CUPSOLE



TRUEFIT

IMPACT
FOAM



PATRIOT

THE PATRIOT ADDS TO THE DESIGN HERITAGE OF THE CLASSIC FALLEN LOOK AND FEEL. A COMFORTABLE CUPSOLE DESIGNED TO HAVE MORE PROTECTION FOR SKATEBOARDING. THE UPGRADED PATRIOT NOW OFFERS A FLX TECHNOLOGY ON THE SOLEPLATE THAT ALLOWS FOR MORE DURABILITY AND COMFORT AND A TRUE FIT FEEL THAT HOLDS THE TONGUE IN THE SAME PLACE AT ALL TIMES.



FALL '21 | 



BLACK / WHITE / GUM  FMK1ZA08
PU NUBUCK / VELCRO STRAP / CUPSOLE



 BLACK / WHITE  FMG1ZA13
SUEDE / COTTON TWILL / CUPSOLE



 FULL BLACK  FMT1ZA30
SUEDE / COTTON TWILL / CUPSOLE



TRUEFIT

IMPACT
FOAM





ROCKSTAR
ENERGY DRINK
SKATELITE

SKATELITE

SKATELITE

triple eight

ELLIOT SLOAN
PHOTO: SCHREINER

THE FIEND

ELLIOT SLOAN PRO MODEL



THE FIEND

ELLIOT SLOAN'S NEW PRO MODEL "THE FIEND" IS A BRAND NEW STYLE OFFERED IN THE FALLEN FOOTWEAR LINE. DESIGNED BY ELLIOT, THIS SHOE IS A TRUE CUPSOLE MID TOP MADE FOR ANKLE SUPPORT AND LONGEVITY.



FALL '21 | 



BLACK / WHITE  FMK1ZA09
SUEDE / COTTON TWILL / CUPSOLE



GRAY / BLACK  FMK1ZA35
SUEDE / CUPSOLE



IMPACT II
FOAM II



ELLIOT SLOAN & DALTON DERN
PHOTO: WILLO

PATRIOT VULC




PATRIOT VULC

A CLASSIC SHAPE BUT NOW VULCANIZED, THE PATRIOT VULC HOLDS TRUE TO THE DESIGN HERITAGE OF THE CLASSIC FALLEN LOOK AND FEEL.

A COMFORTABLE VULC DESIGNED TO HAVE MORE PROTECTION FOR SKATEBOARDING. THE DOUBLE BUMPERS GIVES EXTRA GRIP AND DURABILITY TO HOLD IN THE PLACES YOU NEED IT MOST.



FALL '21 | 



BLACK / PURPLE / YELLOW  FMK1ZA12
SUEDE / COTTON TWILL / VULCANIZED




BROWN / BLACK / RED  FMK1ZA13
WAXED SUEDE / PU NUBUCK / VULCANIZED



BLACK / RED  FMK1ZA14
PU NUBUCK / VULCANIZED



BLACK / WHITE / GUM  FMS1ZA13
SUEDE / PU NUBUCK / VULCANIZED





DALTON DERN
PHOTO: WILLO


BOMBER C-03



BOMBER C-03

INTRODUCING THE NEW BOMBER C-03! A CLASSIC STYLE NOW AVAILABLE IN A CUPSOLE CONSTRUCTION AND MORE PADDING. ADDED COMFORT AND GREATER REINFORCEMENTS TO A CLASSIC STYLE.



FALL '21 | 



BLACK / WHITE  FMK1ZA15
SUEDE / COTTON TWILL / CUPSOLE



YELLOW / BLACK  FMK1ZA16
SUEDE / CUPSOLE



RED / WHITE  FMK1ZA17
PU NUBUCK / CUPSOLE



BLACK  FMK1ZA18
SUEDE / POLYESTER / CUPSOLE



TRUEFIT

IMPACT
FOAM

BOMBER



BOMBER

THE BOMBER IS A CLASSIC STYLE TO THE FALLEN FOOTWEAR LINE. THIS STAPLE VULCANIZED CONSTRUCTION SHOE HAS BEEN PROVEN TO LAST AND IS READY TO GO OUT OF THE BOX.

FALL '21 | 



CYAN / WINE  FMK1ZA19
SUEDE / CANVAS / VULCANIZED



NAVY / RED  FMK1ZA21
SUEDE / VULCANIZED



 BLACK / BLACK  FMG1ZA05
SUEDE / COTTON TWILL / VULCANIZED



BOMBER

THE BOMBER IS A CLASSIC STYLE TO THE FALLEN FOOTWEAR LINE. THIS STAPLE VULCANIZED CONSTRUCTION SHOE HAS BEEN PROVEN TO LAST AND IS READY TO GO OUT OF THE BOX.

FALL '21 | 



WINE / GUM  FMK1ZA20
SUEDE / COTTON TWILL / VULCANIZED



 BLACK / GUM  FMG1ZA03
SUEDE / COTTON TWILL / VULCANIZED



 BLACK / WHITE  FMG1ZA04
SUEDE / COTTON TWILL / VULCANIZED





THE EASY



THE EASY

THE NEW EASY WAS ADAPTED SO THAT IT CAN BE USED WITHOUT LACES AND HAVE THE FEEL AND LOOK OF A CLASSIC SLIP-ON.

WITH IMPACT FOAM TECHNOLOGY (SPECIAL FORMULA FOR HIGH IMPACT AND COMFORT) AND HEEL DRAG (ADDITIONAL RUBBER REINFORCEMENT IN THE HEEL TO IMPROVE DURABILITY).

FALL '21 | 



WINE / CYAN / GUM  FMK1ZA22
SUEDE / VULCANIZED



WHITE / WHITE  FMK1ZA23
PU TEXTURED / VULCANIZED



BLACK RWTF  FMK1ZA24
PU NUBUCK PRINTED / VULCANIZED



BLACK / WHITE  FMH1ZA15
SUEDE / CANVAS / VULCANIZED





TROOPER

CHRIS COLE PRO MODEL



TROOPER

A CLASSIC CHRIS COLE SIGNATURE MODEL BUT REDESIGNED BY COLE TO FIT WHAT HE LIKES MOST IN A CUPSOLE SHOE. OFFERING THE ORIGINAL LOOK OF THE "TROOPER" WHILE MAXIMIZING COMFORT, DURABILITY, AND OVERALL FUNCTION. A WORK HORSE SHOE, THE TROOPER IS BUILT TO LAST!



FALL '21 | 



BLACK / BLACK / WHITE  FMK1ZA25
PU NUBUCK / CUPSOLE



5250 RED  FMK1ZA26
SUEDE / PU NUBUCK / CUPSOLE



BLACK / PLUM  FMK1ZA27
SUEDE / PU NUBUCK / CUPSOLE



BLACK / BLACK / RED  FMH1ZA19
SUEDE / CUPSOLE



TRUEFIT

IMPACT
FOAM



RIPPER

CHRIS COLE PRO MODEL



RIPPER

THE "RIPPER" IS A CLASSIC CHRIS COLE SIGNATURE FALLEN FOOTWEAR DESIGN THAT WE BROUGHT BACK FOR THE MOST OBVIOUS OF REASONS, IT'S JUST A GREAT SKATE SHOE WITH A TON OF CLASSIC FEATURES. THESE FEATURES MAKE THE RIPPER MORE DURABLE THAN IT INITIALLY APPEARS. THIS SHOE OFFERS SUPERIOR CUSHIONING IMPACT FOAM INSOLES THAT CREATES MAXIMIZE COMFORT, DURABILITY, AND OVERALL FUNCTION. THIS NEW RIPPER WAS BUILT TO TAKE ANYTHING CHRIS COLE COULD THROW AT IT AND WAS DESIGNED TO WITHSTAND THE ABUSE, WHILE ALSO MAINTAINING COMFORT AND LONGEVITY.

CHRIS COLE
RIPPER



FALL '21 | 



GREEN / BLACK  FMK1ZA28
SUEDE / VULCANIZED



BEIGE / BLACK / ORANGE  FMK1ZA29
PU NUBUCK / VULCANIZED



PLUM  FMK1ZA31
SUEDE / VULCANIZED



 BLACK / WHITE II  FMJ1ZA42
SUEDE / CANVAS / VULCANIZED



TRUEFIT

IMPACT II
FOAM





T-GUN
TOMMY SANDOVAL PRO MODEL

T-GUN

INSPIRED BY ALL OF TOMMY'S FAVORITE PAST SIGNATURE MODELS. THE "T-GUN" FEATURES A CLASSIC VULCANIZED CONSTRUCTION, WITH A ONE-PIECE TOE CAP THAT WILL GIVE YOU MUCH BETTER BOARD FEEL AND THE FLICK YOU ARE LOOKING FOR. YOU WILL NEVER FIND A SANDOVAL SIGNATURE MODEL WITHOUT OUR TRUE FIT FEATURE. MIX THAT WITH OUR "ABRASION RESISTANT OUTSOLE, IMPACT FOAM INSOLE, AND NATURAL SUEDE + COTTON TWILL AND YOU HAVE A VERY CAPABLE SHOE THAT COVERS ALL OF YOUR MOST IMPORTANT BASIS.



FALL '21 | **FF**



BLACK / RASTA **FF** FMK1ZA32
PU NUBUCK / VULCANIZED



GREEN / WHITE **FF** FMK1ZA33
SUEDE / VULCANIZED



SAND / VIBES **FF** FMK1ZA34
SUEDE / CANVAS / VULCANIZED



TRUEFIT

**IMPACT
FOAM II**



THE GOAT



THE GOAT

WE LOVE TO MAKE OUR FANS HAPPY SO WE ARE STOKED TO BRING BACK A CLASSIC SILHOUETTE WITH A NEW NAME "THE GOAT".
A TIMELESS COMFORTABLE VULCANIZED DESIGN THAT WE ALL LOVED AND MISSED.



FALL '21 | 



BLACK / RED  FMK1ZA36
SUEDE / VULCANIZED



BLACK / LIME  FMK1ZA37
SUEDE / VULCANIZED



WHITE / GREEN  FMK1ZA38
ACTION LEATHER / VULCANIZED





CHRISTOPHER HIETT
PHOTO: WILLO

THE LOC

TONY CERVANTES PRO MODEL



THE LOC

INTRODUCING "THE LOC" DESIGNED BY TONY CERVANTES. PAYING RESPECTS TO THE HERITAGE OF THE BRAND AND PAST RIDERS WE TEAMED OF WITH TONY TO RELEASE HIS FIRST EVER SIGNATURE PRO MODEL SHOES. THIS VULC SHOE OFFERS A FULLY PROTECTED TOE CAP AREA UNLIKE ANYTHING WE HAVE DONE IN THE PAST. A LOWER PROFILE SHOE SPECIALLY REINFORCED TO LAST LONGER AND PROVIDE ULTIMATE GRIP SUPPORT AND DURABILITY.



BLACK / WHITE  FMK1ZA39
COTTON TWILL / SUEDE / VULCANIZED



GREEN SARAPE  FMK1ZA40
SUEDE / VULCANIZED



IMPACT
FOAM

PATRIOT YOUTH



GUNNER SANDOVAL
PHOTO: WILLO

PATRIOT YOUTH

ONE OF FALLEN'S TOP SELLING STYLES NOW AVAILABLE IN YOUTH SIZING. A CLASSIC AN AFFORDABLE SHOE BUILT FOR KIDS AT ANY LEVEL OF SKATING. OFFERING DOUBLE BUMPER PROTECTION GIVING EXTRA GRIP AND DURABILITY WHERE IT'S NEEDED MOST.

FALL '21 | 



BLACK / WHITE  FJK1ZA01
SYNTHETIC SUEDE / VULCANIZED



BLACK / RED  FJK1ZA02
SYNTHETIC SUEDE / CANVAS / VULCANIZED



BLACK / PURPLE / WHITE  FJK1ZA03
SUEDE / COTTON TWILL / VULCANIZED



BLACK PIXEL  FJK1ZA04
SYNTHETIC SUEDE / PRINTED CANVAS / VULCANIZED



T-SHIRTS



T-SHIRTS

FALL '21 | 



INSIGNIA TEE
FMK1RE01
100% COTTON - 160 GRS
WHITE



PURPLE



BLACK



YELLOW



TRADEMARK TEE
FMK1RE02
100% COTTON - 160 GRS
ACID RED



BLACK



WINE



MILITARY GREEN



INSIGNIA BACK TEE
FMK1RE03
100% COTTON - 160 GRS
RED



BLACK



RORSHACH
FMK1RE05
100% COTTON - 160 GRS
PURPLE



CINNAMON

T-SHIRTS

FALL '21 | 



BONES TEE
FMK1RE10
100% COTTON - 160 GRS
WINE ENZYMATIC WASH



BLACK ENZYMATIC WASH



RISE WITH TEE
FMK1RE11
100% COTTON - 160 GRS
YELLOW



BLACK



BIKER TEE
FMK1RE16
100% COTTON - 160 GRS
BLACK




STRIPES TEE
FMK1RE25
100% COTTON - 160 GRS
RASTA



RED / BLACK

T-SHIRTS

FALL '21 | 



RISE FULL TEE
FMK1RE26
100% COTTON - 160 GRS
BLACK FULL PRINT



BLUR TEE
FMK1RE27
100% COTTON - 160 GRS
ACID WHITE



TIE DYE L/S TEE
FMK1RE21
100% COTTON - 160 GRS
TIE DYE YELL



INSIGNIA BACK S/L TEE
FMK1RE24
100% COTTON - 160 GRS
PURPLE



BLACK



STRIPES L/S TEE
FMK1RE23
100% COTTON - 160 GRS
RED / BLACK



CHRIS COLE APPAREL

LL '21 | 



TROOPER TEE
FMK1RE13
100% COTTON - 160 GRS
BLACK ENZYMATIC WASH



COBRA HOODIE
FMK1BU05
60% COTTON - 40% POLYESTER - 300 GRS
YELLOW / BLACK



COBRA HOODIE
FMS1BU05
60% COTTON - 40% POLYESTER - 300 GRS
VIOLET / BLACK

ELLIOT SLOAN APPAREL



THE FIEND HENLEY
FMK1RE30
100% COTTON - 160 GRS
GRAY / BLACK

TONY CERVANTES APPAREL

FALL '21 | 



THE LOC TEE
FMK1RE12
100% COTTON - 160 GRS
BLACK ENZYMATIC WASH

TOMMY SANDOVAL APPAREL



JAH TEE
FMK1RE14
100% COTTON - 160 GRS
BLACK ENZYMATIC WASH



JAH HOODIE
FMK1BU12
60% COTTON - 40% POLYESTER - 300 GRS
BLACK

HOODIES



HOODIES

FALL '21 | 



INSIGNIA HOODIE
FMK1BU01
100% COTTON - TIE DYE - 300 GRS
ACID WHITE



BLACK



PURPLE



RED



TRADEMARK HOODIE
FMK1BU02
100% COTTON - TIE DYE - 300 GRS
ACID RED



BLACK



WINE



CINNAMON



RISE WITH HOODIE
FMK1BU06
60% COTTON - 40% POLYESTER - 300 GRS
YELLOW



RED



BLACK

HOODIES

FALL '21 | 



BONES HODDIE
FMK1BU07

60% COTTON - 40% POLYESTER - 300 GRS
SEA GREEN



BONES HODDIE
FMK1BU07

60% COTTON - 40% POLYESTER - 300 GRS
BLACK



BONES HODDIE
FMK1BU07

60% COTTON - 40% POLYESTER - 300 GRS
CINNAMON




ACID WASH HOODIE
FMK1BU09

100% COTTON - 300 GRS
BLACK

JACKETS



JACKETS

FALL '21 | 



ALL TERRAIN JACKET
FMK1CA01

ANORAK 100% POLYESTER WITH PU COATING - LINING POLYESTER.
RED / BLACK



ALL TERRAIN JACKET
FMK1CA01

ANORAK 100% POLYESTER WITH PU COATING - LINING POLYESTER.
BLACK



LAMB JACKET
FMS1CA02

HEAVY BRUSHED FLANNEL 92% POLYESTER - 4% ACRYLIC
LINING 100% SHERPA POLIESTER AND PADDING
BLACK / HABANO



LAMB JACKET
FMS1CA02

HEAVY BRUSHED FLANNEL 92% POLYESTER - 4% ACRYLIC
LINING 100% SHERPA POLIESTER AND PADDING
YELLOW / BLACK



LAMB JACKET
FMS1CA02

CORDUROY 100% COTTON
LINING 100% SHERPA POLIESTER AND PADDING
BLACK

YOUTH APPAREL



YOUTH T-SHIRTS

SPRING '21 | 



INSIGNIA TEE
FJK1RE01
100% COTTON - 160 GRS
YELLOW



BLACK



PURPLE



BIKER TEE
FJK1RE16
100% COTTON - 160 GRS
BLACK



BLUR TEE
FJK1RE27
100% COTTON - 160 GRS
ACID WHITE



STRIPES L/S TEE
FJK1RE23
100% COTTON - 160 GRS
RED / BLACK

YOUTH HOODIES

SPRING '21 | 



INSIGNIA HOODIE
FJK1BU01

60% COTTON - 40% POLYESTER - 280 GRS
BLACK / WHITE



RED



BLACK



BONES HOODIE
FJK1BU06

60% COTTON - 40% POLYESTER - 280 GRS
BLACK

YOUTH JACKETS



ALL TERRAIN JACKET
FJK1CA01

100% POLYESTER - 280 GRS
BLACK




LAMB JACKET
FJK1CA02

100% POLYESTER - 280 GRS
YELLOW / BLACK

HATS



HATS

FALL '21 | 



INSIGNIA
FMJ1CP01
BLACK



INSIGNIA
FMJ1CP01
PURPLE



INSIGNIA
FMJ1CP01
BLACK/YELLOW



BAR LOGO
FMS1CP06
BLACK



BAR LOGO
FMS1CP06
RED



TRADEMARK
FMJ1CP03
BLACK



TRADEMARK
FMJ1CP03
BLACK/ENZYMATIC WASH



TRADEMARK
FMJ1CP03
BATIK



TRADEMARK
FMJ1CP03
RED/BLACK



GRUNGE
FMS1CP03
BLACK



RISE W/ THE FALLEN
FMK1CP04
BLACK



RISE W/ THE FALLEN
FMK1CP04
WHITE/BLACK




RISE W/ THE FALLEN
FMK1CP04
BLACK/RED



LABEL HAT
FMJ1CP06
BLACK

HATS & BEANIES

FALL '21 | 



HUNTER HAT
FMK1CP02
BLACK W/ENZYMATIC WASH



HUNTER HAT
FMK1CP02
BLACK BATIK



TRADEMARK BEANIE
FMJ1G001
CINNAMON



TRADEMARK BEANIE
FMJ1G001
BLACK



TRADEMARK BEANIE
FMJ1G001
RED



INSIGNIA BEANIE
FMK1G001
PURPLE

INSIGNIA BEANIE
FMK1G001
BLACK

INSIGNIA BEANIE
FMK1G001
YELLOW



BACKPACKS

BACKPACKS

FALL '21 | 



MELROSE BACKPACK  **FMJ1M003**
BLACK/RED STRIPES - BLACK/RED - CAMO



BOARD BAG  **FMJ1M001**
BLACK - BLACK/YELLOW



DISORDER BACKPACK  **FMJ1M002**
BLACK/RED - BLACK/PURPLE



DUSTY PACK  **FMS1M004**
BLACK - RED/BLACK



SOCKS

SOCKS

FALL '21 | 



TRADEMARK STRIPED SOCK  FMJ1ME01
80% COTTON - 1% NYLON - 2%ELASTANE
BLACK/RED - RASTA - WHITE/BLACK



TRADEMARK SOCK  FMJ1ME02
80% COTTON - 1% NYLON - 2%ELASTANE
RED/BLACK - BLACK/RED - PURPLE/YELLOW



UNI SOCK  FMJ1ME03
80% COTTON - 1% NYLON - 2%ELASTANE
BURN ORANGE/BLACK - GREEN/BLACK



INSIGNIA SOCK  FMJ1ME04
80% COTTON - 1% NYLON - 2%ELASTANE
BLACK/WHITE - WHITE/BLACK - MELEE/BLACK



RISE W / THE FALLEN SOCK  FMJ1ME05
80% COTTON - 1% NYLON - 2%ELASTANE
WHITE/BLACK - BLACK/WHITE


SOCKS

FALL '21 | 



STATIC SOCK  **FMJ1ME07**
80% COTTON - 1% NYLON - 2%ELASTANE
BLACK/WHITE - BLACK/RED



CRUSHING SOCK  **FMJ1ME08**
80% COTTON - 1% NYLON - 2%ELASTANE
YELLOW/BLACK - BLACK /WHITE



PURELY SOCK  **FMJ1ME06**
80% COTTON - 1% NYLON - 2%ELASTANE
PURPLE/BLACK - BLACK/YELLOW



DISSORDER LOWCUT SOCK  **FMJ1ME12**
80% COTTON - 1% NYLON - 2%ELASTANE
BLACK - WHITE - MELEE



WRISTBANDS  **FMJ1ME14**
BLACK/WHITE - RED/BLACK
BLACK/WHITE/RED



ZACH DOELLING
PHOTO: FERRA

FOOTWEAR OVERVIEW

FALL '21 | 

PHOENIX



PATRIOT



PATRIOT VULC



T-GUN



BOMBER



THE LOC



BOMBER C-03



TROOPER



THE FIEND



PATRIOT YOUTH



THE GOAT



THE EASY



RIPPER






ADAM ARUNSKI
PHOTO: WILLO

STICKERS

PACK 1  FMK1ST01

FALL '21 | 



STICKERS

PACK 2  FMK1ST01

FALL '21 | 





ZACH DOELLING
PHOTO: FERRA

FALLEN TEAM

PRO:

CHIRS COLE
TOMMY SANDOVAL
BILLY MARKS
TONY CERVANTES
ELLIOT SLOAN

AM:

ADAM ARUNSKI
ZACH DOELLING
REGGIE KELLY
DAVE BOHACK
CHRISTOPHER HIETT

FOOTWEAR SIZE CHART

FF FALLEN																
USA	5	6	6,5	7	7,5	8	8,5	9	9,5	10	10,5	11	11,5	12	13	14
UK	4	5	5,5	6	6,5	7	7,5	8	8,5	9	9,5	10	10,5	11	12	13
EUR	37	38	38,5	39	40	40,5	41	42	42,5	43	44	44,5	45	46	47	48
CM	23.7	24.5	25	25.4	25.8	26.2	26.6	27.1	27.5	27.9	28.3	28.7	29.2	29.6	30.4	31
INCH	9.3	9.6	9.8	10	10.1	10.3	10.5	10.6	10.8	11	11.1	11.3	11.5	11.6	12	12.2

FF FALLEN						YOUTH
USA	1	2	3	4	5	
UK	13	1	2	3	4	
EUR	32	33	35	36	37	
CM	19,5	20,5	21,5	22	23	
INCH	7.6	8	8.4	8.7	9	

DESIGNED PURELY FOR SKATEBOARDING



RISE WITH THE FALLEN

WWW.FALLENFOOTWEAR.COM

f / FALLENFOOTWEAR

@ / FALLEN.FOOTWEAR



TJ PERSON
PHOTO: WILLO