

MAKIA WOMEN

FALL 2012 - WINTER 2013

MAKIACLOTHING.COM
STORE.MAKIACLOTHING.COM



MAKIA WOMEN

“FAILURE IS IMPOSSIBLE”

– SUSAN B. ANTHONY

NOTES BY CARMELA FLEURY, JAPAN SEPTEMBER 2011

We knew we were stepping into uncharted territory when we first started making women's clothes.
After doing a couple of so called "draft" collections we feel like we can now remove the word from this page where it used to read,
and with pride, present the women's line as it should be presented. This is MAKIA WOMEN.

33 million people in greater Tokyo.
Yet feels so calm, safe, and
peaceful. —



A person with dark, curly hair is shown in a close-up, slightly out of focus shot. They are looking down at their hands, which are holding a small object. The background is a vast, hazy cityscape with numerous skyscrapers and buildings, viewed from a high elevation. A metal railing is visible in the foreground, partially obscuring the view. The overall tone is contemplative and somewhat melancholic.

The closer things are the less you can see them.



Raglan Parka







Keep running into the same dozen people every weekend. We must be destined to talk like every decadent vice, little pleasures can only be appreciated when lived for short amounts of time.



Pocket T-Shirt



This train stops at: All stations
KODAMA 659 14:04 Nagoya
This train stops at: All stations

I am a global nomad at heart. I
love traveling on my own. I feel
most grounded in moving vehicles.
—



Pocket T-Shirt

Seagulls wheel high in the sky
above our heads.
So we went hand in hand walking
along by the sea.
I love the thought of sharing
the happiest moments in life
with my tall and handsome
Finnish husband.



Short Jacket

Love the businessman in the background
looking for seashells, heart shaped rocks,
childhood memories, or a new job? WTF.



Duffle Coat

Knitted Denim Shirt

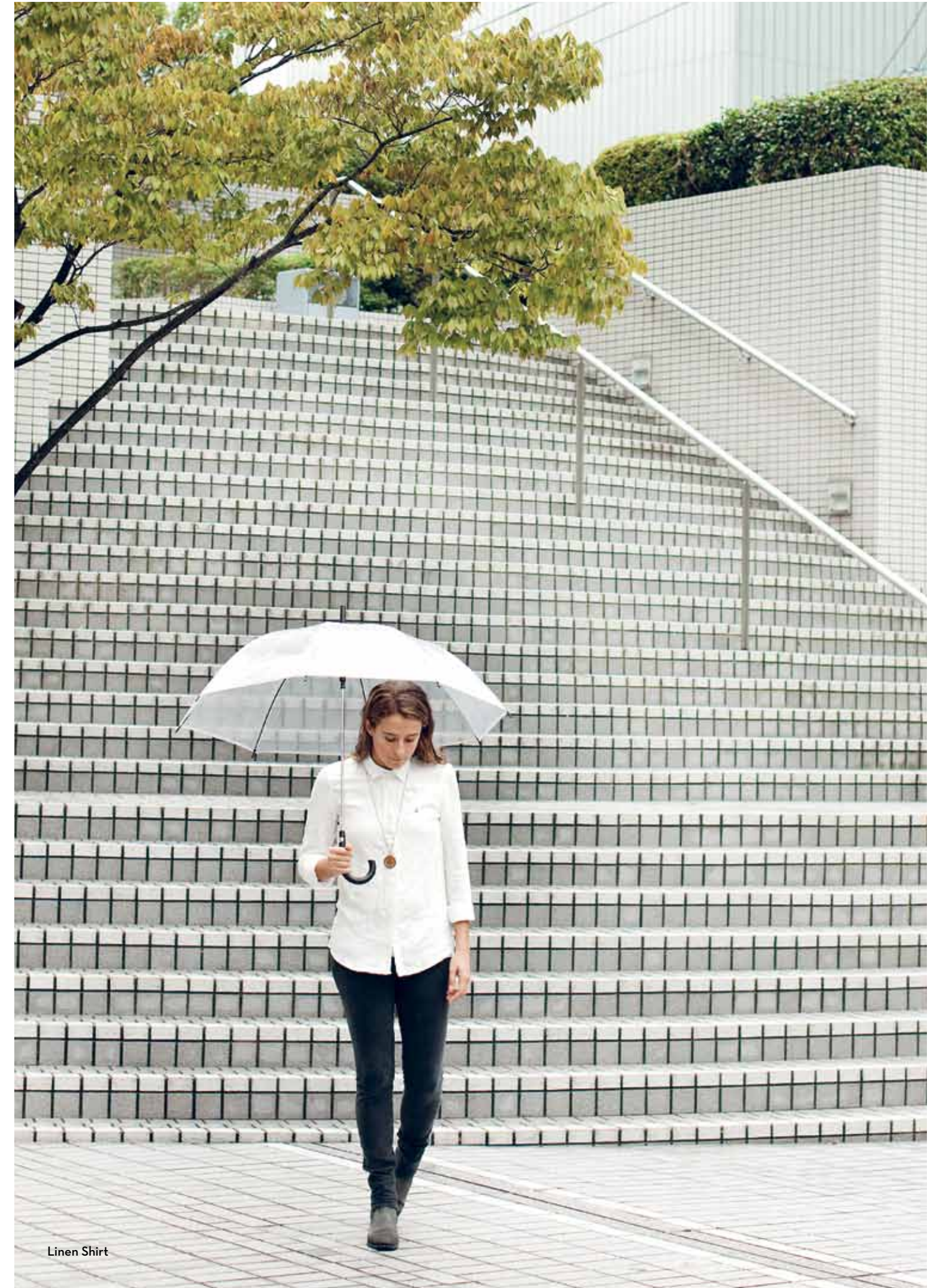


The mona lisa smile is apparently attributed to her finding out that she was pregnant.

I've never managed to leave Helsinki
Sober. I've somehow always ended
up vomiting on my shoes.

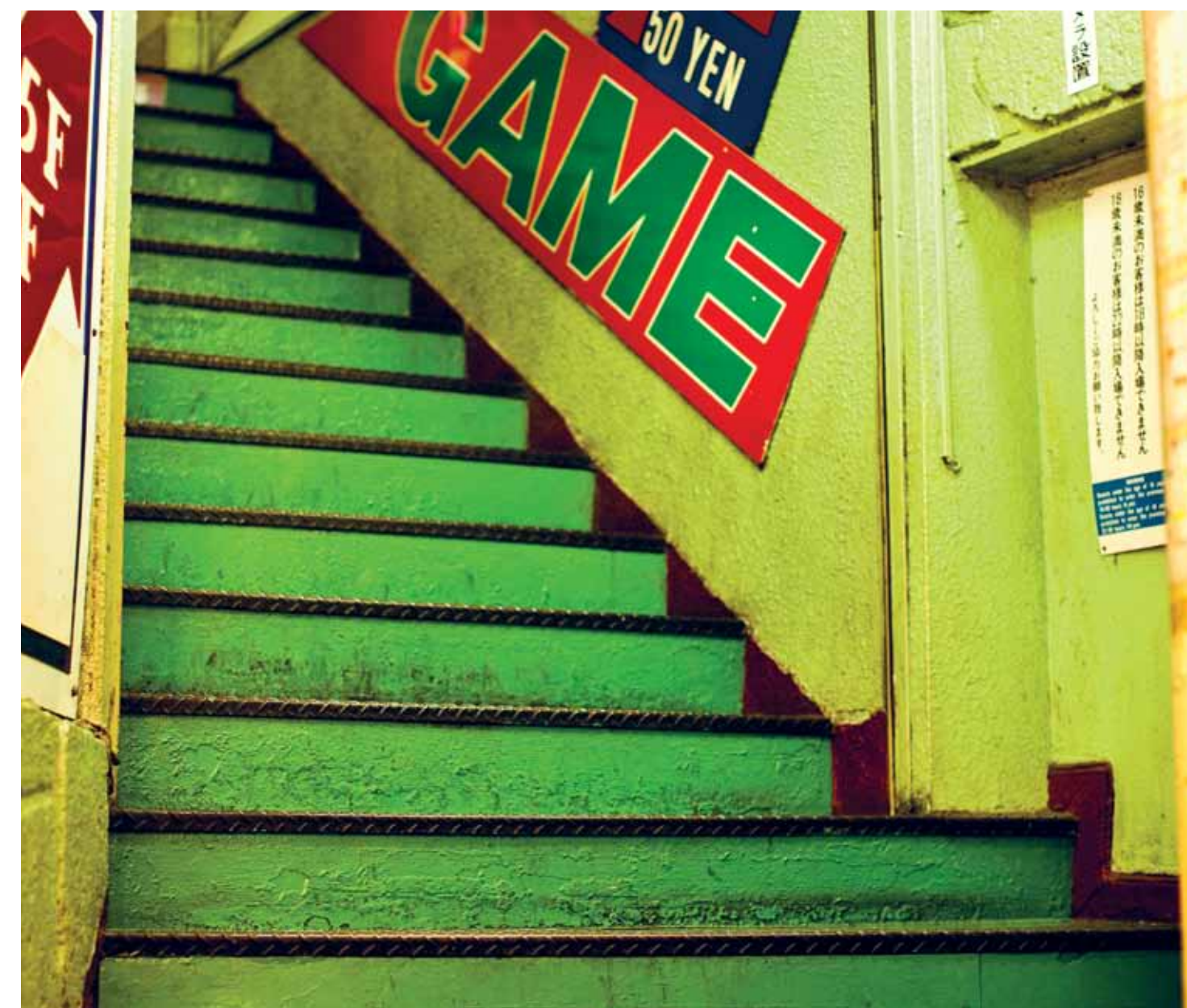
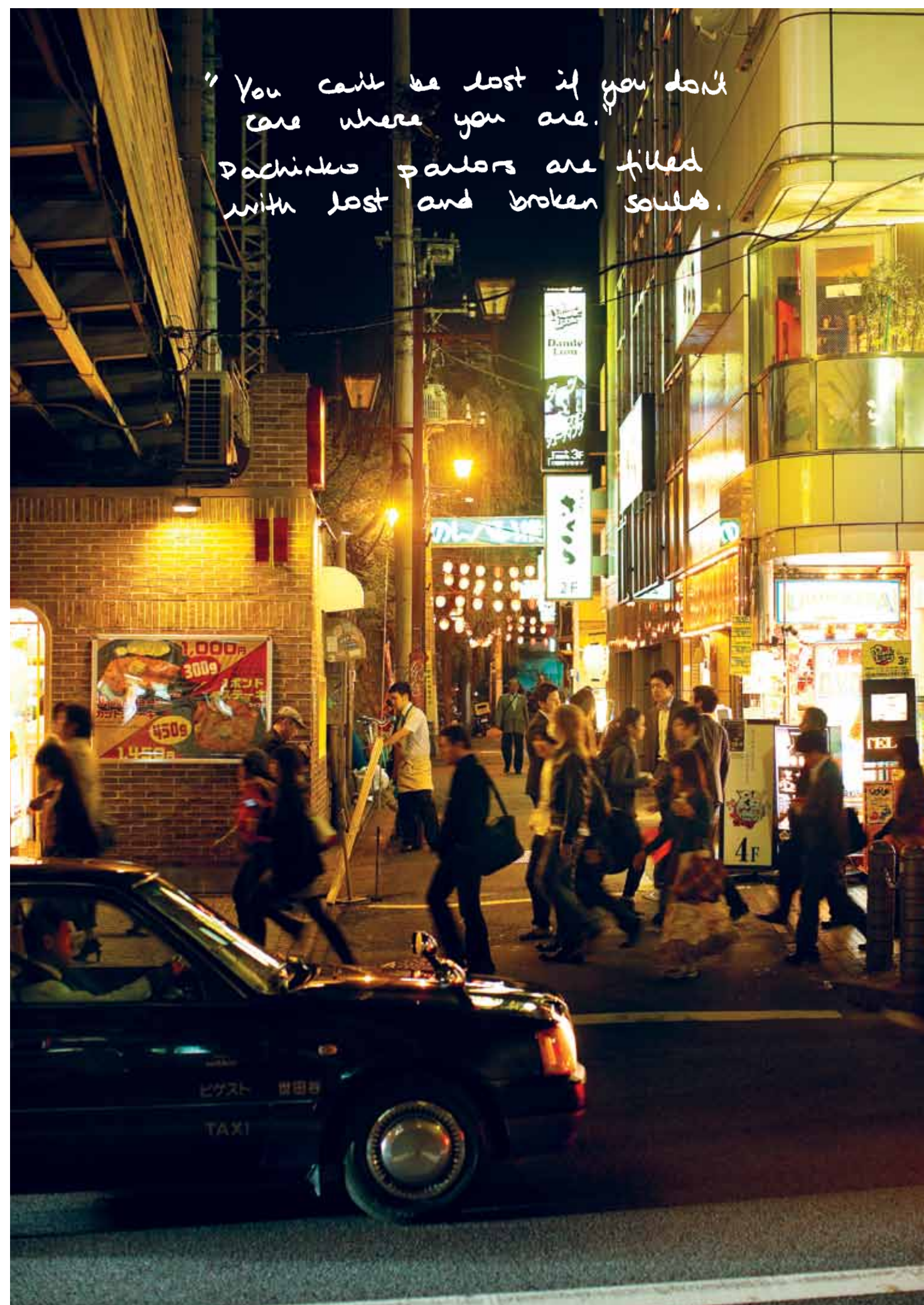


Tunic



Linen Shirt





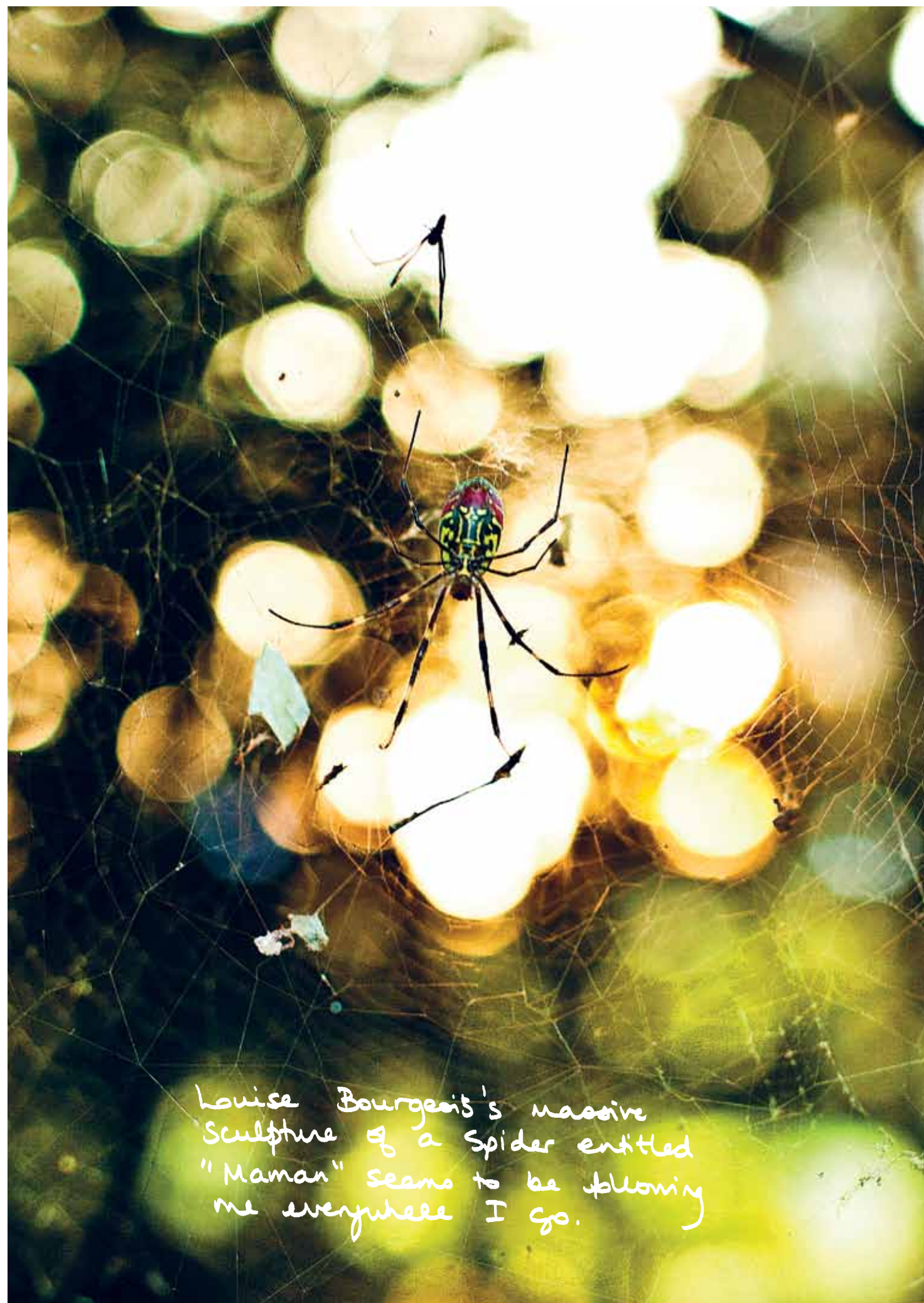


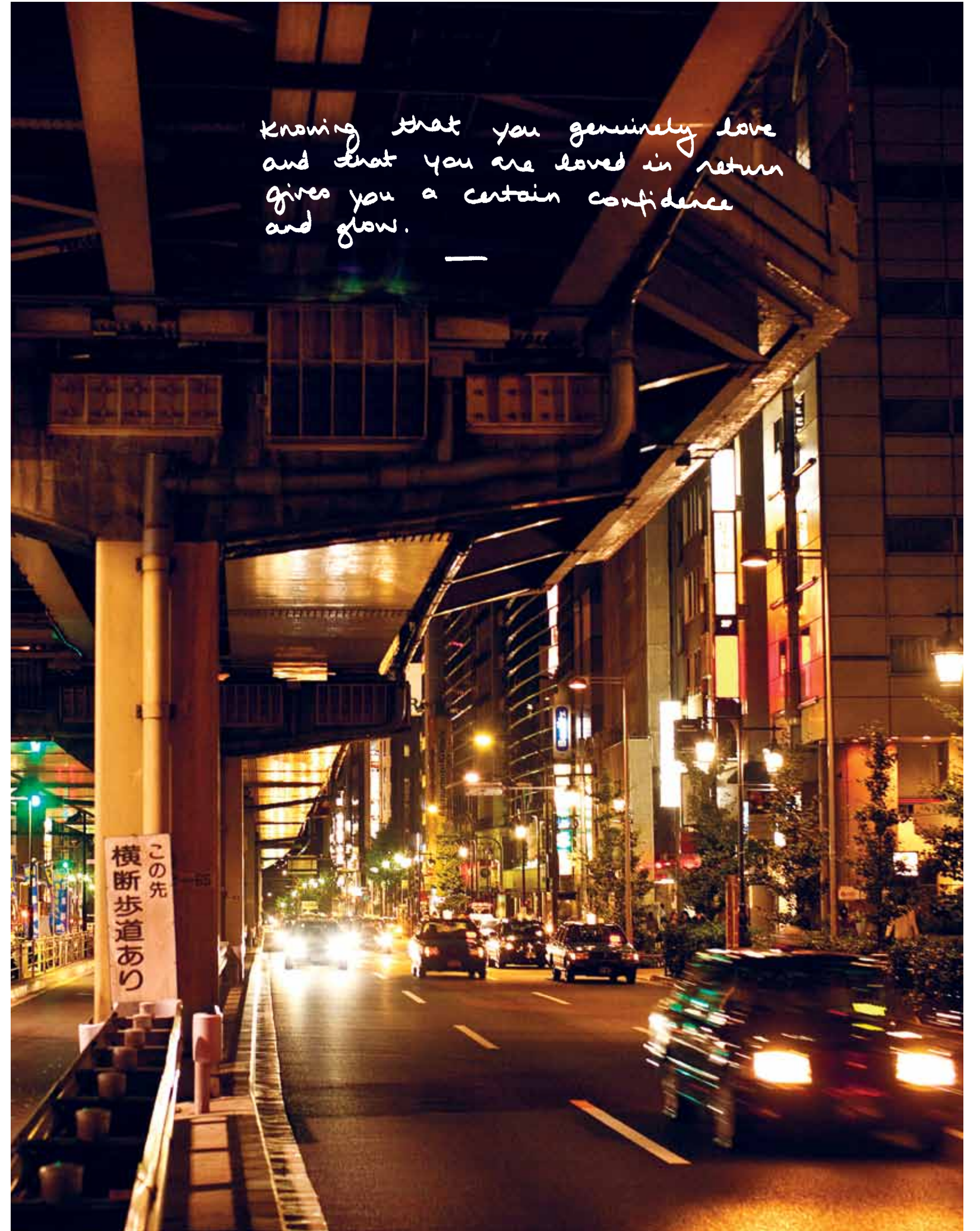
Button Up Hooded Sweatshirt



"Blessed are they who see beautiful things in humble places where other people see nothing." - Camille Pissarro -
How many busy people walk by this window daily and never take a moment to look out? myself included











Long Sleeve Shirt

women before 10 am ? mission impossible.
How about 11:32 am ?





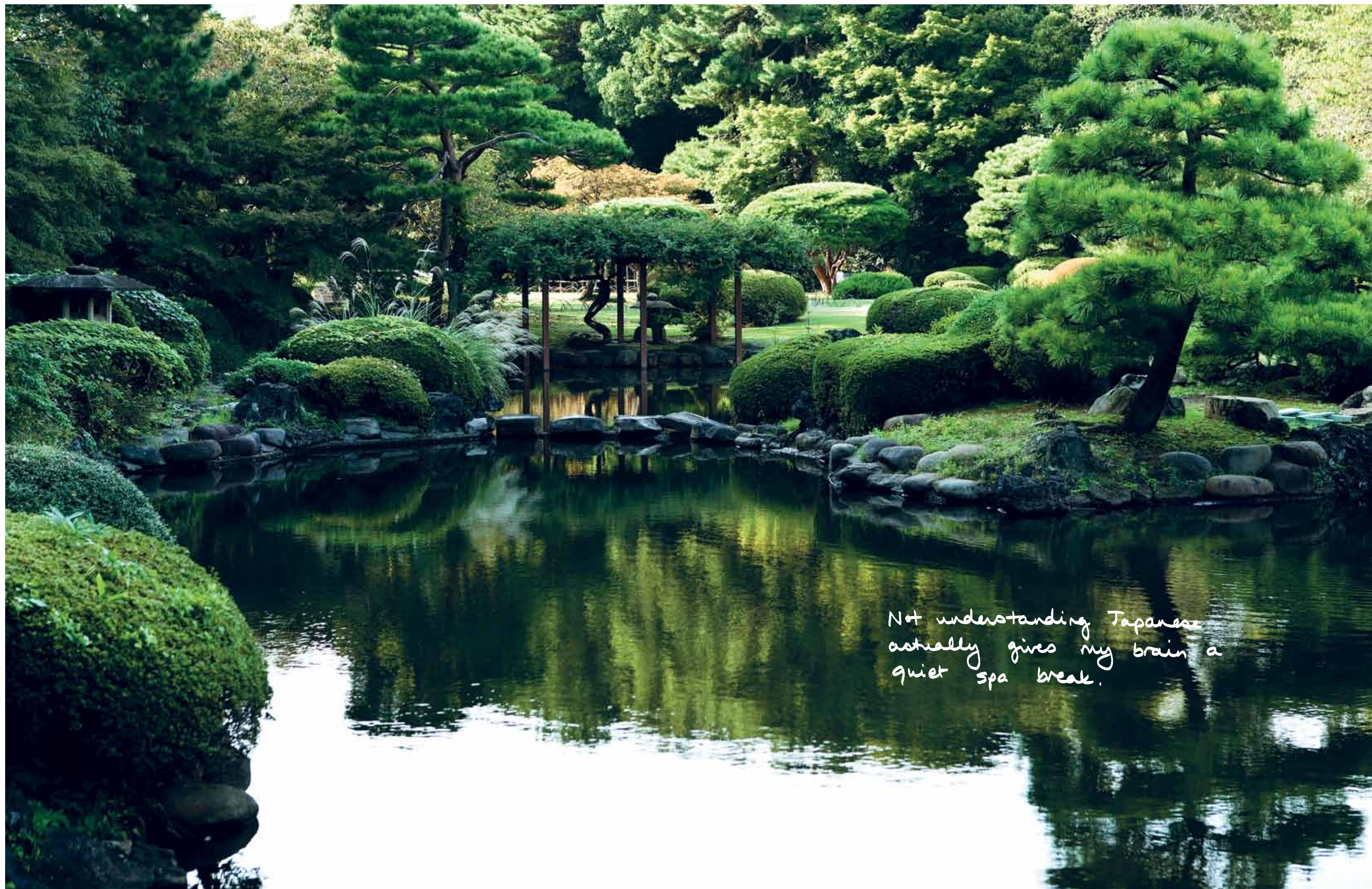


Steel Flag Zip-Up
Hooded Sweatshier

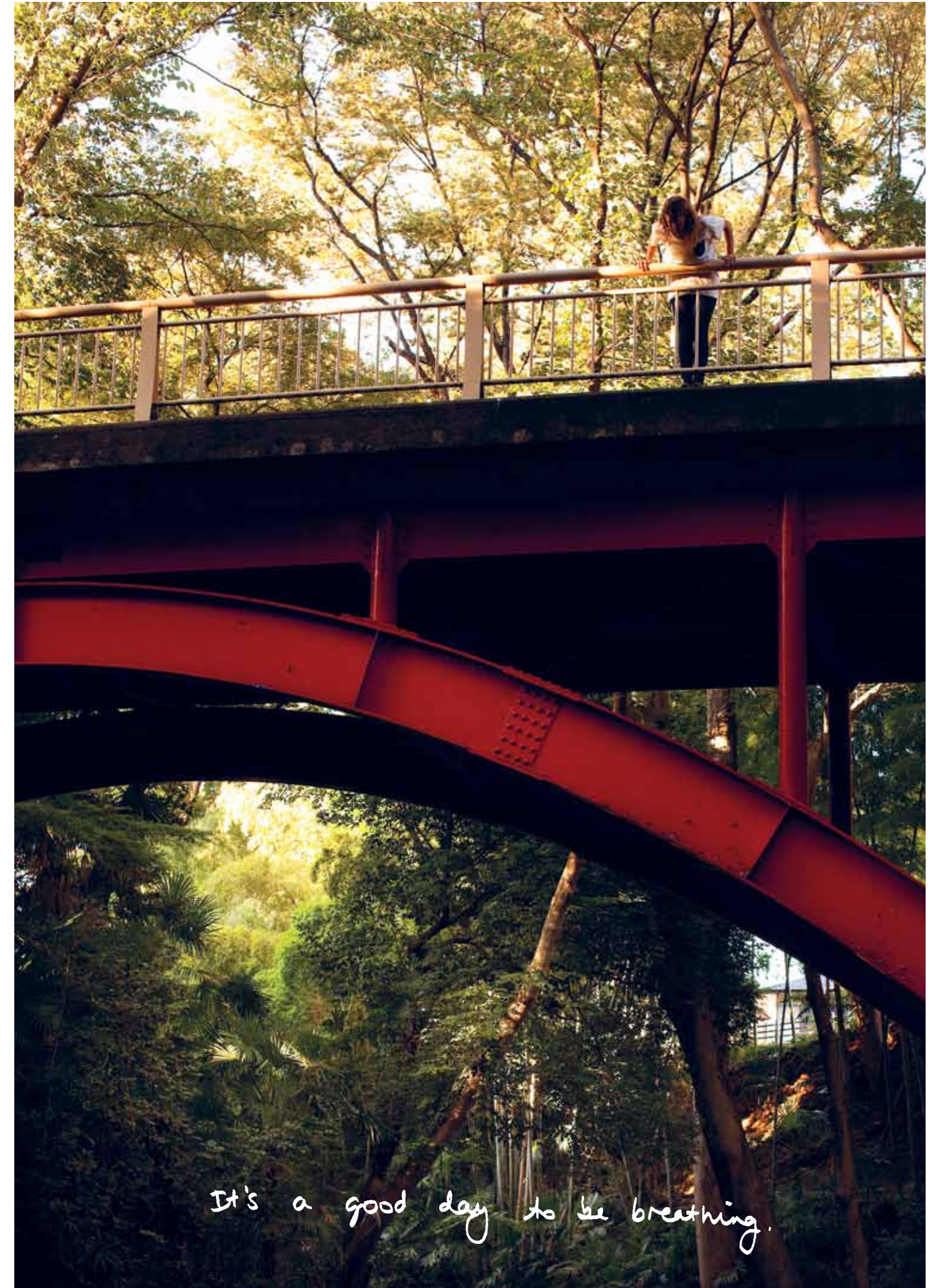


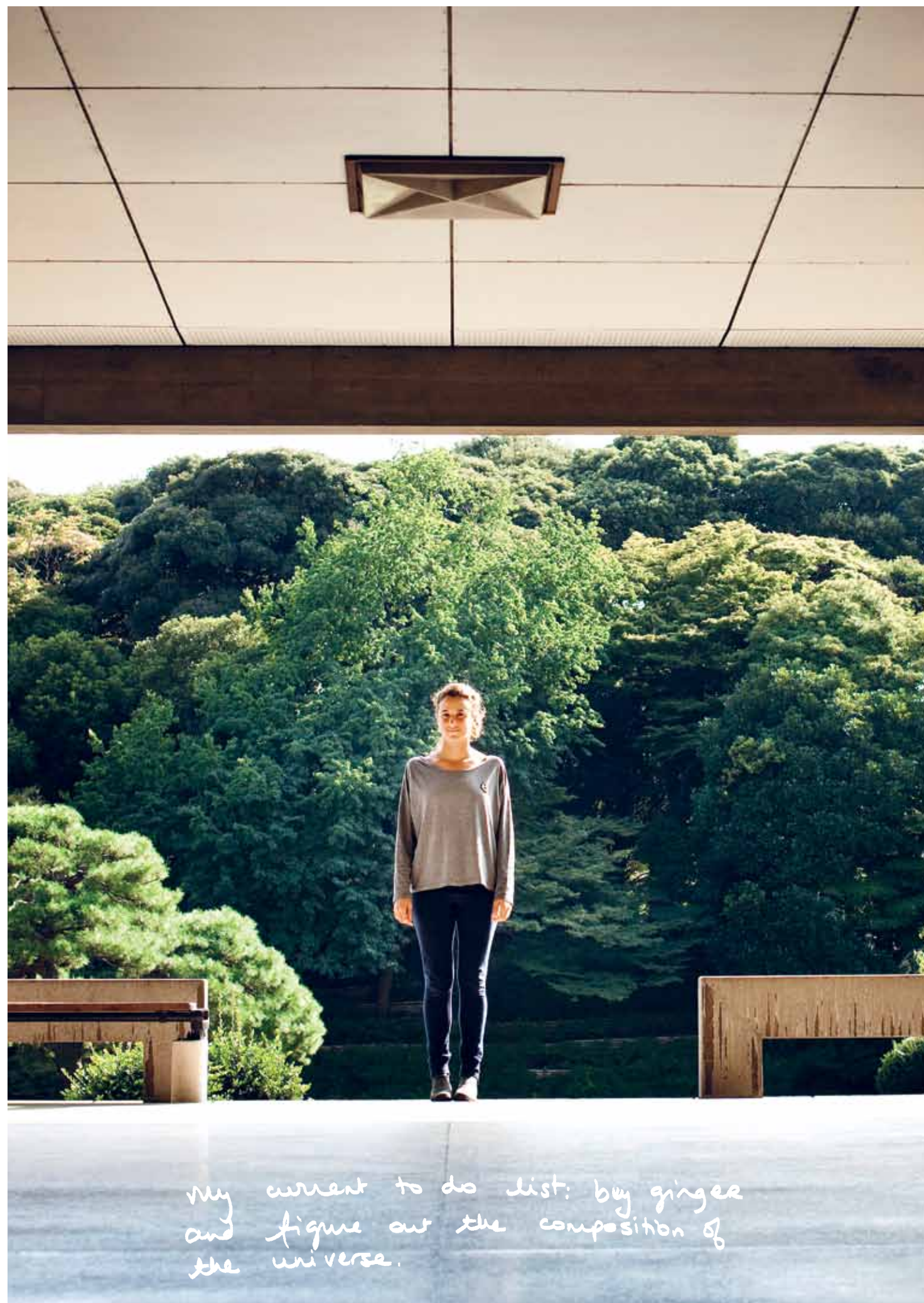
Tokyo is the world's most populous
metropolitan area. In two years I
have never locked my bike.

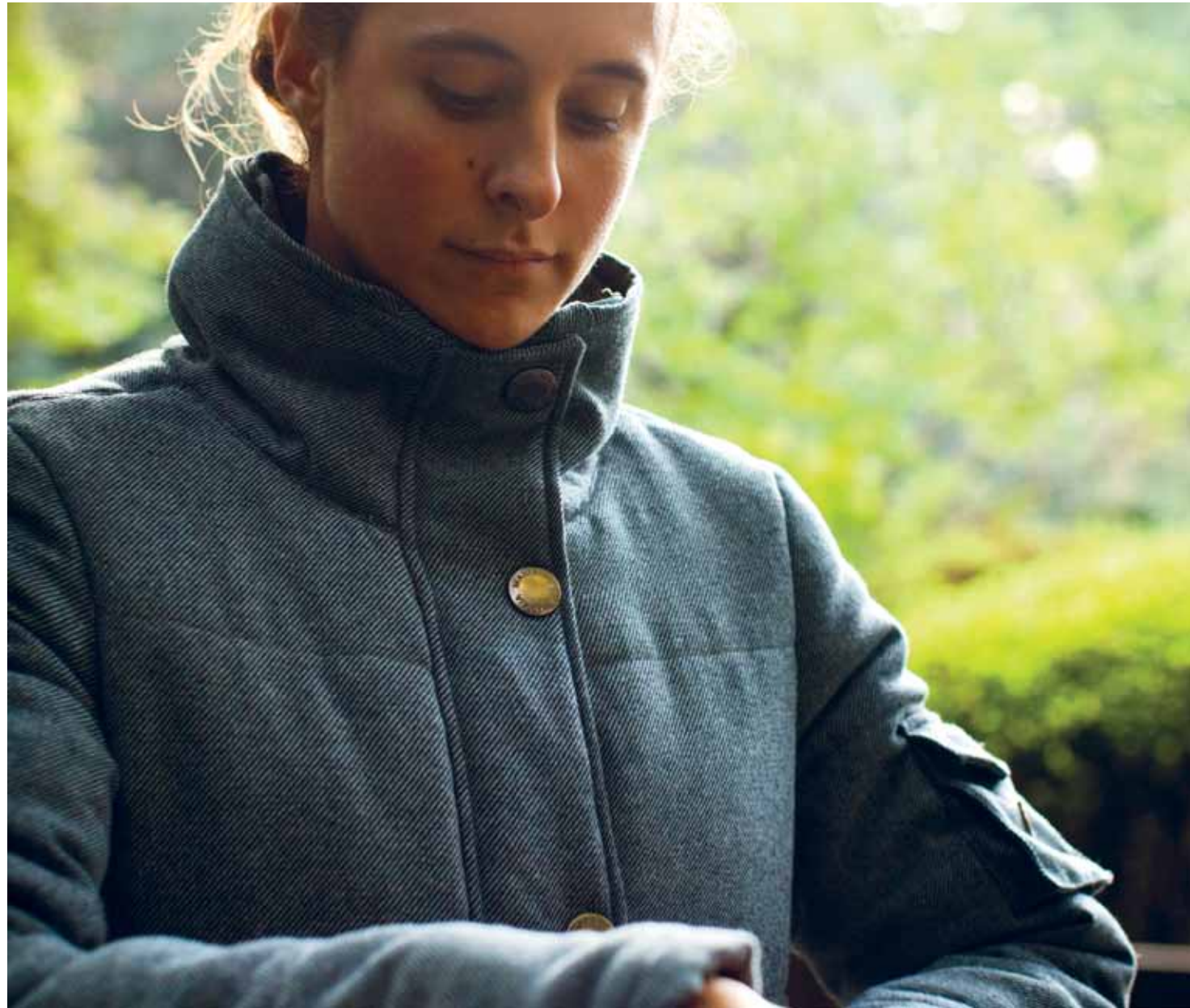
Hooded Knit



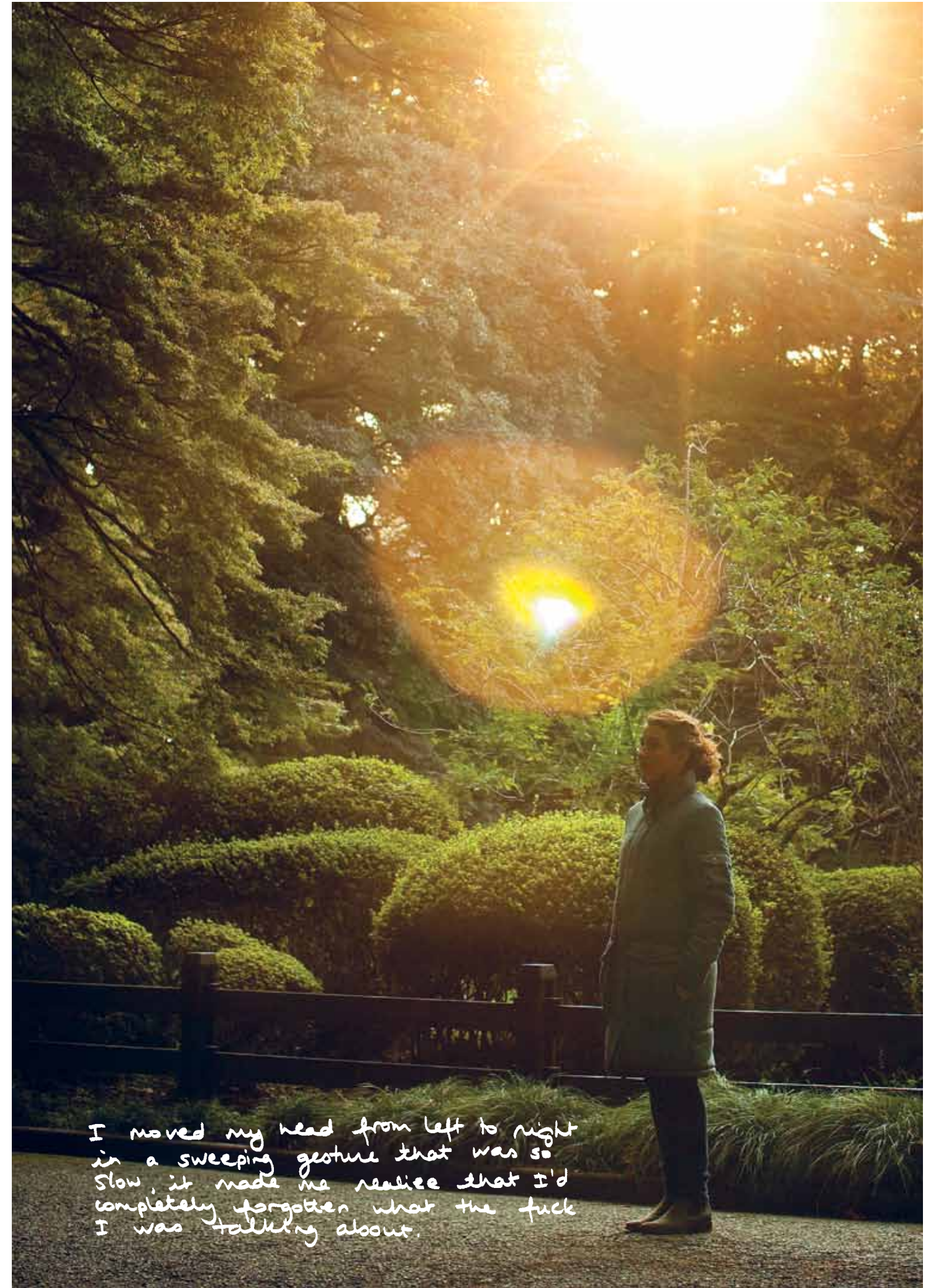
Not understanding Japanese
actually gives my brain a
quiet spa break.







Long Twill Jacket





It's never too late to have a
happy childhood.

Kinderfest Mittens



Wax Jacket

Watch out the temporary
can last a long time.





**RAGLAN PARKA
BLACK**

XS | S | M | L W3071A
100% POLYAMIDE / 4000MM COATING
/ FAUX FUR LINING.



**RAGLAN PARKA
OLIVE**

XS | S | M | L W3071C
100% POLYAMIDE / 4000MM COATING
/ FAUX FUR LINING.



**RAGLAN PARKA
BRIGHT BLUE**

XS | S | M | L W3071E
100% POLYAMIDE / 4000MM COATING
/ FAUX FUR LINING.



**WAX JACKET
OLIVE**

XS | S | M | L W303A
100% COTTON / WAX / COTTON LINING

**WAX JACKET
RUST**

XS | S | M | L W303B
100% COTTON / WAX / COTTON LINING



**RAGLAN PARKA
AUTUMN**

XS | S | M | L W3071F
100% POLYAMIDE / 4000MM COATING
/ FAUX FUR LINING.



**RAGLAN PARKA
MOLTEN LAVA**

XS | S | M | L W3071B
100% POLYAMIDE / 4000MM COATING
/ FAUX FUR LINING.



**RAGLAN PARKA
DENIM BLUE**

XS | S | M | L W3071D
100% COTTON / PU COATING / FAUX FUR LINING



**SHORT JACKET
BLACK**

XS | S | M | L W304A
100% COTTON / PU COATING / POLYESTER LINING
/ LIGHT POLY INSULATION



**SHORT JACKET
AUTUMN**

XS | S | M | L W304B
100% COTTON / PU COATING / POLYESTER LINING
/ LIGHT POLY INSULATION



**DUFFLE COAT
BLACK / BIKING RED**

XS | S | M | L W302A
50% WOOL 50% POLYESTER / COTTON LINING



**DUFFLE COAT
NAVY**

XS | S | M | L W302B
50% WOOL 50% POLYESTER / COTTON LINING



**LONG TWILL JACKET
BLUE**

XS | S | M | L W305B
90% POLYESTER 10% WOOL /
LINING 100% POLYESTER /
HEAVY POLY INSULATION



**LONG TWILL JACKET
GREY**

XS | S | M | L W305A
90% POLYESTER 10% WOOL /
LINING 100% POLYESTER /
HEAVY POLY INSULATION



**BUTTON UP HOODED SWEATSHIRT
BLACK**

XS | S | M | L W401A
100% COTTON



**STEEL FLAG ZIP UP HOODED SWEATSHIRT
BLACK**

XS | S | M | L W402A
100% COTTON



**HOODED KNIT
NAVY**

XS | S | M | L W403A
60% NYLON 40% WOOL



**STRIPE KNIT CARDIGAN
BLACK / NATURAL WHITE**

XS | S | M | L W502A
100% COTTON



**MULTICOLOR TUNIC
RED**

XS | S | M | L W601A
100% COTTON



**MULTICOLOR TUNIC
BLUE**

XS | S | M | L W601B
100% COTTON



**BUTTON UP HOODED SWEATSHIRT
MEDIUM GREY**

XS | S | M | L W401B
100% COTTON



**STEEL FLAG ZIP UP HOODED SWEATSHIRT
MEDIUM GREY**

XS | S | M | L W402B
100% COTTON



**HOODED KNIT
DARK GREY**

XS | S | M | L W403B
60% NYLON 40% WOOL



**STRIPE KNIT CARDIGAN
BLACK / BIKING RED**

XS | S | M | L W502B
100% COTTON



**TUNIC
BLUE**

XS | S | M | L W602B
100% COTTON



**TUNIC
RED**

XS | S | M | L W602A
100% COTTON



**KNIT CARDIGAN
BLACK**

XS | S | M | L W501A
100% COTTON



**KNIT CARDIGAN
LIGHT GREY**

XS | S | M | L W501B
100% COTTON



**LINEN SHIRT
NATURAL WHITE**

XS | S | M | L W604
100% LINEN



**KNITTED DENIM SHIRT
BLACK**

XS | S | M | L W603A
95% COTTON 5% ELASTANE



**KNITTED DENIM SHIRT
BLUE**

XS | S | M | L W603B
95% COTTON 5% ELASTANE



KNIT DENIM DRESS
BLACK

XS | S | M | L W605A
95% COTTON 5% ELASTANE



LONG SLEEVE
POCKET T-SHIRT
BLACK / NATURAL WHITE

XS | S | M | L W202A
100% LINEN



LONG SLEEVE SHIRT
BLACK / BIKING RED

XS | S | M | L W204A
100% COTTON



POCKET T-SHIRT
NAVY MELANGE

XS | S | M | L W201A
100% COTTON



POCKET T-SHIRT
MEDIUM GREY

XS | S | M | L W201C
100% COTTON



QUILL T-SHIRT
RED MELANGE

XS | S | M | L M205A
100% COTTON



KNIT DENIM DRESS
DENIM

XS | S | M | L W605B
95% COTTON 5% ELASTANE



LONG SLEEVE
POCKET T-SHIRT
BLACK / BIKING RED

XS | S | M | L W202B
100% LINEN



LONG SLEEVE SHIRT
NAVY MELANGE / LIGHT GREY

XS | S | M | L W204B
100% COTTON



POCKET T-SHIRT
LIGHT GREY

XS | S | M | L W201B
100% COTTON



POCKET T-SHIRT
OLIVE MELANGE

XS | S | M | L W201D
100% COTTON



QUILL T-SHIRT
LIGHT GREY

XS | S | M | L W205B
100% COTTON



SUSAN LONG SLEEVE
LIGHT GREY

XS | S | M | L W203A
100% COTTON



SUSAN LONG SLEEVE
MEDIUM GREY

XS | S | M | L W203B
100% COTTON



SUSAN LONG SLEEVE
NAVY MELANGE

XS | S | M | L W203C
100% COTTON

KINDERFEST CAP
BLACK

ONE SIZE W801A
100% COTTON

KINDERFEST SCARF
BLACK

ONE SIZE W802A
100% COTTON

KINDERFEST MITTENS
BLACK

ONE SIZE W803A
100% COTTON



KINDERFEST CAP
BIKING RED

ONE SIZE W801B
100% COTTON

KINDERFEST SCARF
BIKING RED

ONE SIZE W802B
100% COTTON

KINDERFEST MITTENS
BIKING RED

ONE SIZE W803B
100% COTTON



**BUTTON UP
HOODED SWEATSHIRT**
MEDIUM GREY

62 | 74 | 86 | 98 | 110 | 122 | 134 K852B
100% COTTON



V-NECK KNIT
DARK GREY

62 | 74 | 86 | 98 | 110 | 122 | 134 K851A
100% COTTON



**LONG SLEEVE PRINT
T-SHIRT**
MEDIUM GREY

62 | 74 | 86 | 98 | 110 | 122 | 134 K853B
100% COTTON



**LONG SLEEVE PRINT
T-SHIRT**
DARK GREY

62 | 74 | 86 | 98 | 110 | 122 | 134 K853A
100% COTTON





Success or failure. Keep
moving forward.

- Carmela Fleury

Who Carmela and why Carmela?

Because, not only is she the wife of one of our original founding members, but also a woman we admire on all fronts. Chosen as one of “Action Sports’ Most Influential Women” by Transworld Business, she turns heads on all levels of the industry. A true friend, a big motivator and a muse for our company in general.

This catalogue is dedicated to Ivar Fougstedt.

Photography by Juha Mustonen / juhamustonen.com



This catalogue was printed by ArtPrint Helsinki / artprint.fi