





03-TECH FEATURES / 07-TEAM COLLECTION
20-BLACKTOP COLLECTION / 21-LIFESTYLE COLLECTION
45-PRIMARY COLLECTION / 47-CAMP COLLECTION
49-TRIFECTA COLLECTION / 51-PATCH COLLECTION
56-CANVAS / 60-MISHKA COLAB
63-RIDER REVOLT / 71-GIRLS COLLECTION
73-SEQUINS COLLECTION / 75-ANIMAL COLLECTION
78-KIDS COLLECTION / 82-SOFTGOODS
97-ACCESSORIES / 99-OVERVIEW



JT
AULTZ

TECHNICAL FEATURES



CTRL

The new CTRL System is made up of the following components: our T3 Technology, RX Insole and OG Cush and is available in three (3) stages to maximize each shoe's overall fit, comfort and performance.

C

CTRL System Stage 1:

This stage features our new RX insole technology, a dual density blown EVA (Ethylene Vinyl Acetate) insole, which greatly improves fit while maximizing comfort and support against high impacts.

C

CTRL System Stage 2:

This stage features our new RX insole technology and OG Cush construction; a thin (3mm) EVA (Ethylene Vinyl Acetate) sheet reinforced with a Polypag substrate, which adds an additional layer of cushioning and support against high impacts.

C

CTRL System Stage 3:

This stage features our new RX insole technology, OG Cush construction and T3 Technology. T3 is a thin (5mm) PU (Poly Urethane) Foam that is sewn into the toe and vamp area, which adds an additional layer of protection while improving the overall fit. Osiris is proud to introduce the new cld vlc integration system w/ ctrl, which will be featured on all our vulcanized models.



**T3 Technology:**

In an effort to help with toe impact, we have developed T3 Technology. T3 is a thin (5mm) PU (Poly Urethane) Foam or better known as Memory Foam that is sewn into the toe and vamp area, which adds an additional layer of protection. This process is added to the traditional construction of the toe and vamp area to improve fit, while increasing comfort & impact resistance. Select Osiris models feature our new T3 Technology

**RX Insole:**

Dual density EVA (Ethylene Vinyl Acetate) is used for added cushioning and support in all Osiris insoles. This allows for improved fit & comfort

**OG Cush:**

This OG Cush process is used on select Osiris styles. This construction replaces the traditional sockliner material with a thin EVA (Ethylene Vinyl Acetate) sheet, which decreases weight while increasing comfort

**Synthetics:**

Unique layering of materials is used throughout the Osiris line. These layers of synthetics, leathers, rubbers and meshes are used to give our footwear maximum structural support, added comfort, greater performance & durability

**Unique Layering:**

Synthetic materials are used throughout the entire Osiris line. The purpose of using synthetics is that they are more abrasion resistant, more stretch resistant and greatly reduce the overall weight of the shoe

**Lace Protection:**

Several Osiris models feature alternative lace options, which allow for increased lace protection. In addition, it allows for a variety of lacing options for added comfort & performance

**Grip:**

Osiris outsoles are tested during development to ensure the highest quality of performance and durability. Unique tread patterns are formed to maintain superb grip & board feel

**Flex:**

Key flex grooves are inlayed into each Osiris outsole to guarantee quick break in, increased grip and ideal board feel

**MidSole PU / Air:**

Polyurethane is a closed-cell injected molded foam. Since polyurethane is injected, it allows us to encapsulate our airbag system with the midsole material to ensure superior cushioning and added protection from high impact

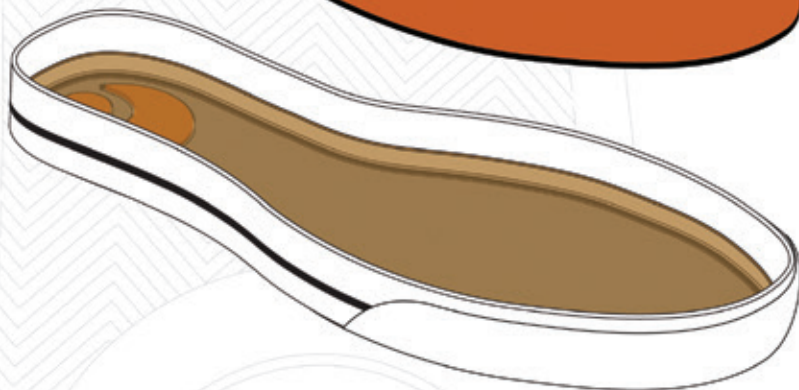
**Midsole EVA:**

EVA (Ethylene Vinyl Acetate) is used for added cushioning and support in select Osiris outsoles. This allows for improved comfort and function

**VLKN:**

The VLKN technology allows the outsole of the shoe to be manufactured without a color dam on the bottom, which is usually what separates the molded "fake vulcs" from the traditional. This technology features 3 different outsoles, all of which incorporate "designed imperfections" to more closely mimic traditional vulc shoes for better durability. It also features the Osiris herringbone pattern, a diamond shaped outsole pattern, and midsole gauges which traditional vulc shoes have, creating that sought after "board feel"

TECHNICAL FEATURES





The new CLD VLC integration system w/ ctrl is made up of the following key components; our T3 Technology, RX Insole, OG Cush and CLD VLC Construction. By joining these key elements we have created a shoe that is lighter, more flexible, comfortable and durable than traditional vulcanized shoes. With the new CLD VLC integration system w/ CTRL, there is no break - in period like you find with traditional vulcanized shoes.

This is due to less glues and material being used in the assembly of the shoe, making the shoe more pliable, becoming one with your foot. In addition, the new CLD VLC integration system w/ CTRL is better for the environment. Since less glue, materials and energy are used, there is less waste to be exposed of, making for a much greener product.

The new CLD VLC integration system w/ CTRL is the new standard in vulcanized footwear performance.

Evolution defined...





DUFFEL VLC / CASWELL VLC

BINGAMAN VLC / PLG VLC

CHAVETA / DECAY / EFFECT



舞台

team
collection

DUFFEL VLC

st-1256

UPPER

- Suede, sandbuck, action leather, canvas, mesh upper material(s) for added durability & styling
- Classic skate styling w/ reinforced high abrasion areas for superior durability
- Light-weight padded tongue & collar for added comfort & support
- Combination lacing system for improved fit & styling

OUTSOLE

- CLD VLC sole construction w/ traditional vulc wrap for maximum support & comfort
- Dual density blown PU RX insole w/ full latex covering for added durability & improved fit
- Compression molded EVA OG cush strobel construction for added comfort & increased flexibility
- Abrasion-resistant rubber outsole for increased wear, durability & ideal performance

TECH



SIZES

5-12, 13, 14



141 BLK / WHT / GUM
AL / S / M / **N**



2005 CHR / GRV / GRV
S / M / **N**



2006 TEAL / TAN / WHT
C / M / **2 N**



2007 BLK / BLK / TOP
SB / M / **2 N**





team
collection

CASWELL VLC

st-1255

UPPER

- Suede, sandbuck, canvas, mesh upper material(s) for added durability & styling
- Classic skate styling w/ reinforced high abrasion areas for superior durability
- Light-weight padded tongue & collar for added comfort & support
- Combination lacing system for improved fit & styling

OUTSOLE

- CLD VLC sole construction w/ traditional vulc wrap for maximum support & comfort
- Dual density blown PU RX insole w/ full latex covering for added durability & improved fit
- Compression molded EVA OG cush strobel construction for added comfort & increased flexibility
- Abrasion-resistant rubber outsole for increased wear, durability & ideal performance

TECH



SIZES

5-12, 13, 14



1523 BLK / RED / BLK
S / M 2



1580 BLU / BLU / WHT
C / M



1648 GRV / CHR / WHT
S / M 2



2007 BLK / BLK / TOP
SB / M





team
collection

BINGAMAN VLC

st-1289

UPPER

- Suede, sandbuck, synthetic nubuck, canvas, mesh upper material(s) for added durability & styling
- Classic skate styling w/ reinforced high abrasion areas for superior durability
- Light-weight padded tongue & collar for added comfort & support
- Combination lacing system for improved fit & styling

OUTSOLE

- CLD VLC sole construction w/ traditional vulc wrap for maximum support & comfort
- Dual density blown PU RX insole w/ full latex covering for added durability & improved fit
- Compression molded EVA OG cush strobel construction for added comfort & increased flexibility
- Abrasion-resistant rubber outsole for increased wear, durability & ideal performance

TECH



SIZES

5-12, 13, 14



2008 BLK / SHT / WHT
S / SN / M 2 **IV**



146 BLK / WHT / RED
SN / M **IV**



2009 PUR / GLD / WHT
S / M **IV**



2007 BLK / BLK / TOP
SB / M 2 **IV**





team
collection

PLG VLC

st-1292

UPPER

- Suede, synthetic nubuck, synthetic leather, sandbuck, canvas, mesh upper material(s) for added durability & styling
- Classic skate styling w/ reinforced high abrasion areas for superior durability
- Light-weight padded tongue & collar for added comfort & support
- Combination lacing system for improved fit & styling

OUTSOLE

- CLD VLC sole construction w/ traditional vulc wrap for maximum support & comfort
- Dual density blown PU RX insole w/ full latex covering for added durability & improved fit
- Compression molded EVA OG cush strobel construction for added comfort & increased flexibility
- Abrasion-resistant rubber outsole for increased wear, durability & ideal performance

TECH



SIZES

5-12, 13, 14



141 BLK / WHT / GUM
C / M 2 **IN**



1164 BLK / WHT / LME
S / SN / M **IN**



1580 BLU / BLU / WHT
S / SL / M 2 **IN**



2007 BLK / BLK / TOP
SB / M **IN**



team
collection

CHAVETA

st-1264

UPPER

- Suede, synthetic leather, wool, mesh upper material(s) for added durability & styling
- Classic skate styling w/ reinforced high abrasion areas for superior durability
- Light-weight padded tongue & collar for added comfort & support
- Combination lacing system for improved fit & styling

OUTSOLE

- CLD VLC sole construction w/ traditional vulc wrap for maximum support & comfort
- Dual density blown PU RX insole w/ full latex covering for added durability & improved fit
- Compression molded EVA OG cush strobel construction for added comfort & increased flexibility
- Abrasion-resistant rubber outsole for increased wear, durability & ideal performance

TECH



SIZES

5-12, 13, 14



2010 BLK / BLK / CRM
S / M 2



2011 CHR / PNE / GLD
S / W / M /



2012 GRV / BRN / NAT
S / SL / M 2



UPPER

- Suede, canvas, mesh upper material(s) for added durability & styling
- Classic skate styling w/ reinforced high abrasion areas for superior durability
- Light-weight padded tongue & collar for added comfort & support
- Combination lacing system for improved fit & styling

OUTSOLE

- CLD VLC sole construction w/ traditional vulc wrap for maximum support & comfort
- Dual density blown PU RX insole w/ full latex covering for added durability & improved fit
- Compression molded EVA OG cush strobel construction for added comfort & increased flexibility
- Abrasion-resistant rubber outsole for increased wear, durability & ideal performance

TECH



SIZES

5-12, 13, 14



1580 BLU / BLU / WHT
S / C / M 2



2013 BLK / WHT / RED
S / C / M



2014 BLK / WHT / RR-LETICIA
S / M 2



UPPER

- Suede, wool, canvas, mesh upper material(s) for added durability & styling
- Classic skate styling w/ reinforced high abrasion areas for superior durability
- Light-weight padded tongue & collar for added comfort & support
- Combination lacing system for improved fit & styling

OUTSOLE

- CLD VLC sole construction w/ traditional vulc wrap for maximum support & comfort
- Dual density blown PU RX insole w/ full latex covering for added durability & improved fit
- Compression molded EVA OG cush strobel construction for added comfort & increased flexibility
- Abrasion-resistant rubber outsole for increased wear, durability & ideal performance

TECH



SIZES

5-12, 13, 14



835 BLK / GRV / LME
C / M / **IN**



2015 GRV / TAN / WHT
W / M / **IN**



2016 NVY / WHT / PNK
S / M / **2 IN**



2017 BLK / BLK / ADAMS
S / M / **2 IN**



BLACKTOP COLLECTION

THE CASWELL VLC

1255-2007 BLK / BLK / TOP

THE BINGAMAN VLC

1269-2007 BLK / BLK / TOP

THE PLG VLC

1292-2007 BLK / BLK / TOP

THE DUFFEL VLC

1256-2007 BLK / BLK / TOP







**RHYME RMX / GROUNDS / SOPHISTIC
CONVERT / CURRENCY / RUCKER / L2
NYC83 / NYC83 SHR / NYC83 MID
NYC83 MID SHR / RAIDER / NYC83 VLC
NYC83 MID VLC / G3L / PIXEL / CINUX
LOOT / TROMA REDUX / CH2**

lifestyle
collection

RHYME RMX

st-1238

UPPER

- Suede, action pebble grain, nubuck, pig leather upper material(s) for added durability & styling
- Lifestyle inspired styling w/ reinforced high abrasion areas for superior durability
- Light-weight padded tongue & collar for added comfort & support
- Combination lacing system for improved fit & styling

OUTSOLE

- CLD VLC sole construction w/ traditional vulc wrap for maximum support & comfort
- Dual density blown PU RX insole w/ full latex covering for added durability & improved fit
- Compression molded EVA OG cush strobel construction for added comfort & increased flexibility
- Abrasion-resistant rubber outsole for increased wear, durability & ideal performance

TECH



SIZES

5-12, 13, 14



1863 BLK / CRM / PNK
N / PL



2018 BLK / GRN / GLD
S / APG / PL



lifestyle
collection

GROUNDS

st-1252

UPPER

- Suede, ballistic nylon, synthetic leather, canvas upper material(s) for added durability & styling
- Lifestyle inspired styling w/ reinforced high abrasion areas for superior durability
- Light-weight padded tongue & collar for added comfort & support
- Combination lacing system for improved fit & styling

OUTSOLE

- CLD VLC sole construction w/ traditional vulc wrap for maximum support & comfort
- Dual density blown PU RX insole w/ full latex covering for added durability & improved fit
- Compression molded EVA OG cush strobel construction for added comfort & increased flexibility
- Abrasion-resistant rubber outsole for increased wear, durability & ideal performance

TECH



SIZES

5-12, 13, 14



1042 BLK / OPL / WHT
C / SL / M 1 N



315 BLK / WHT / BRG
NY / M 2 N



163 BRN / TAN / WHT
S / M 2 N



lifestyle
collection

SOPHISTIC

st-1288

UPPER

- Suede, leather, canvas, wool, drytex upper material(s) for added durability & styling
- Classic styling w/ reinforced high abrasion areas for superior durability
- Traditional padded tongue & collar for added comfort & support
- Combination lacing system for improved fit & styling

OUTSOLE

- Cupsole construction featuring an EVA drop in midsole w/ heel insert for maximum support & comfort
- Dual density blown PU RX insole w/ full latex covering for added durability & improved fit
- abrasion-resistant rubber outsole for increased wear, durability & ideal performance

TECH



CTRL

SIZES

5-12, 13, 14

CANVAS



2019 CHR / BRN / TAN
W / N



2020 BLK / CRM / LME / LOTTI
C 2 N



1177 BLK / BLK / CHR
S / L /



1936 SHT / RED / CRM
S 2



lifestyle
collection

CONVERT

st-1290

UPPER

- Suede, corduroy, wool upper material(s) for added durability & styling
- Classic styling w/ convertible heel for easy access
- Traditional padded tongue & collar for added comfort & support
- Combination lacing system for improved fit & styling

OUTSOLE

- Cupsole construction featuring an EVA drop in midsole w/ heel insert for maximum support & comfort
- Dual density blown PU RX insole w/ full latex covering for added durability & improved fit
- abrasion-resistant rubber outsole for increased wear, durability & ideal performance

TECH



CTRL

SIZES

5-12, 13, 14



1874 BLK / BLK / GRV
CRD 2 **N**



1534 GRV / BLK / GUM
W **N**



1968 BLK / GUM / MULTI
S /



1970 GRV / CRM / MULTI
S 2





lifestyle
collection

CURRENCY

st-1298

new model

UPPER

- Suede, synthetic leather, leather, wool, synthetic pig leather upper material(s) for added durability & styling
- Classic styling w/ convertible heel for easy access
- Traditional padded tongue & collar for added comfort & support
- Combination lacing system for improved fit & styling

OUTSOLE

- Cupsole construction featuring an EVA drop in midsole w/ heel insert for maximum support & comfort
- Dual density blown PU RX insole w/ full latex covering for added durability & improved fit
- abrasion-resistant rubber outsole for increased wear, durability & ideal performance

TECH



CTRL

SIZES

5-12, 13, 14



1236 BLK / BLK / BLK
S / SL / SP 2



2021 BRG / CRM / TAN
L / SP



329 BRN / TAN / CRM
L / SHR



2022 GRY / BRN / WHT
W / SL / SP 2





lifestyle
collection

RUCKER

st-1295 *new model*

UPPER

- Synthetic leather, synthetic nubuck, patent leather, mesh upper material(s) for added durability & styling
- Technical skate styling w/ reinforced high abrasion areas for superior durability
- Traditional padded tongue & collar for added comfort & support
- TPR reinforced combination lacing system for added protection & styling

OUTSOLE

- 3/4 Cupsole construction w/ PU midsole and airbag for maximum support & comfort
- Dual density blown PU RX itnsole w/ full latex covering for added durability & improved fit
- Compression molded EVA OG Cush strobel construction for added comfort & increased flexibility
- Abrasion-resistant rubber outsole for increased wear, durability & ideal performance

TECH



SIZES

5-12, 13, 14



107 BLK / CHR / BLK
SL / PL / M 2



1249 BLK / CHR / ORG
SN / SL / M



1746 BLK / CHR / SEA
SL / M 2



117 BLK / GRV / WHT
SL / M



2023 CHR / GRN / PUR
PL / SN / M



1244 CHR / RED / BLK
SN / M 2





lifestyle
collection

L2

st-1299

new model

UPPER

- Nubuck, action pebble grain, synthetic leather, synthetic nubuck, mesh upper material(s) for added durability & styling
- Iconic styling w/ reinforced high abrasion areas for superior durability
- Traditional padded tongue & collar for added comfort & support
- Combination lacing system w/ strap for improved fit & styling

OUTSOLE

- 3/4 Cupsole construction w/ exposed compression molded EVA midsole for maximum support & comfort
- Dual density blown PU RX Insole w/ full latex covering for added durability & improved fit
- Compression molded EVA OG Cush strobel construction for added comfort & increased flexibility
- Abrasion-resistant rubber outsole for increased wear, durability & ideal performance

TECH



CTRL

SIZES

5-12, 13, 14



1953 BLK / LME / BLU
N / SL / M / **2**



2024 BLK / OCN / CHR
N / SL / M / **2**



137 BLK / WHT / BLK
N / SL / M / **2**



2025 BLU / OPL / BLK
SN / SL / M / **2**

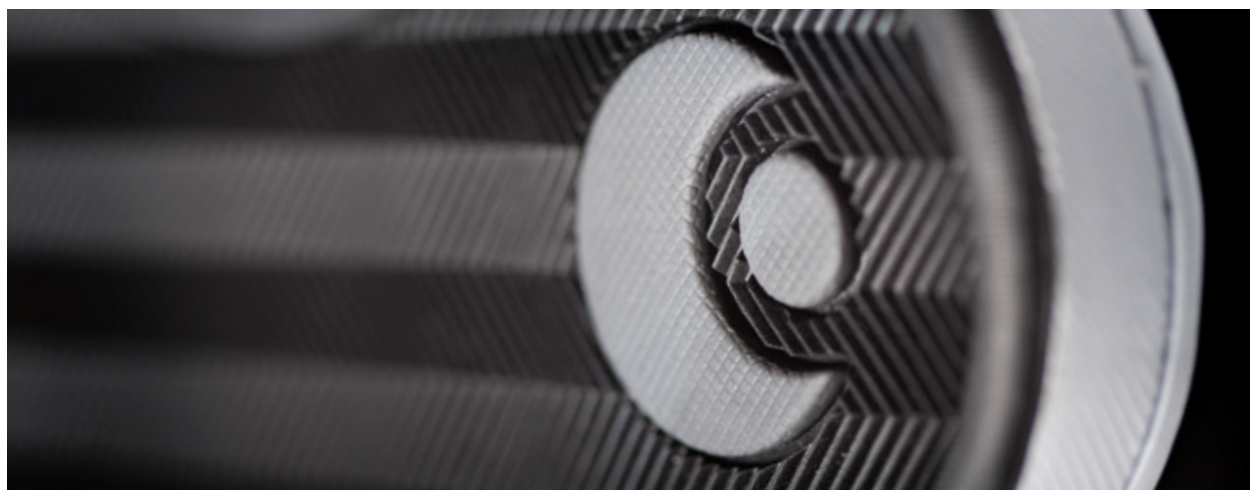


1246 GRY / BLK / RED
SN / SL / M / **2**



763 WHT / PUR / BLK
APG / SL / M / **2**





UPPER

- Synthetic nubuck, synthetic leather, mesh upper material(s) for added durability & styling
- Classic skate styling w/ reinforced high abrasion areas for superior durability
- Traditional padded tongue & collar for added comfort & support
- Combination lacing system for improved fit & styling

OUTSOLE

- Cupsole construction featuring an EVA drop-in midsole w/ heel insert for maximum comfort & support
- Dual density blown PU RX insole w/ full latex covering for added durability & improved fit
- Abrasion-resistant rubber outsole for increased wear, durability & ideal performance

TECH



CTRL

SIZES

5-12, 13, 14



1177 BLK / BLK / CHR
SN / M 2



844 BLK / CHR / WHT
SN / M 2



801 WHT / GRV / WHT
SL / M 2





lifestyle
collection

PROTOCOL

st-1293

new model

UPPER

- Synthetic nubuck, mesh upper material(s) for added durability & styling
- Classic skate styling w/ reinforced high abrasion areas for superior durability
- Traditional padded tongue & collar for added comfort & support
- Combination lacing system for improved fit & styling

OUTSOLE

- VLCN cupsole construction for maximum comfort & support
- Molded EVA insole w/ full latex covering for added durability & improved fit
- Abrasion-resistant rubber outsole for increased wear, durability & ideal performance

TECH



SIZES

5-12, 13, 14



104 BLK / BLK / WHT
SN / M



951 BLU / BLK / WHT
SN / M



607 RED / BLK / WHT
SN / M





lifestyle
collection

STRAY

st-1294 *new model*

UPPER

- Canvas upper material(s) for added durability & styling
- Classic skate styling w/ reinforced high abrasion areas for superior durability
- Deconstructed tongue & collar for added comfort & flexibility

OUTSOLE

- VLCN cupsole construction for maximum comfort & support
- Molded EVA insole w/ full latex covering for added durability & improved fit
- Abrasion-resistant rubber outsole for increased wear, durability & ideal performance

TECH



SIZES

5-12, 13, 14



104 BLK / BLK / WHT
SN / M

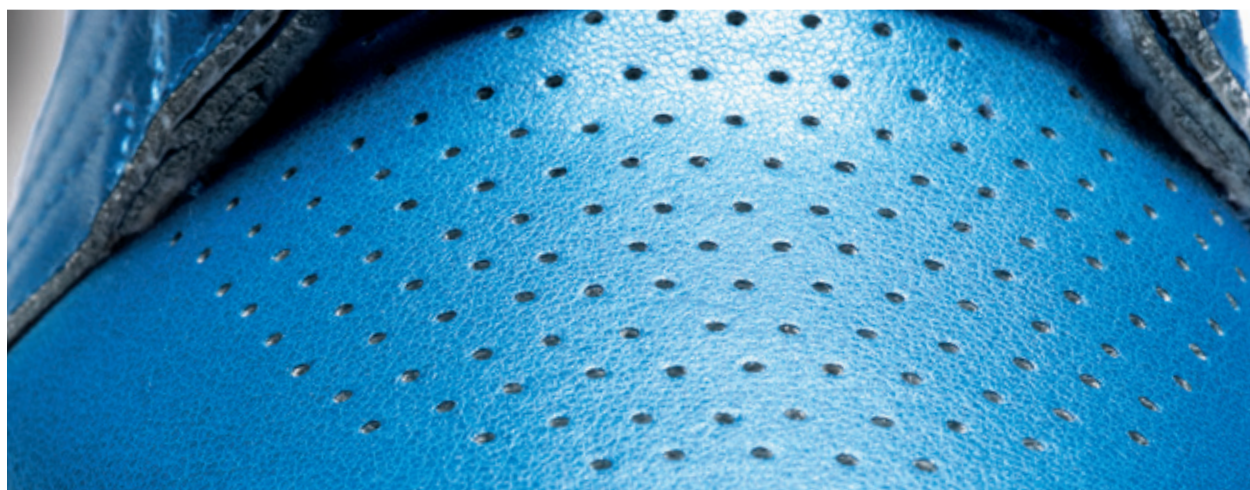


2084 NVY / BLU / GRN
C / C



2085 RED / ORG / PUR
C / C





lifestyle
collection

RAIDER

st-1296 *new model*

UPPER

- Suede, patent leather, synthetic leather, synthetic nubuck, mesh upper material(s) for added durability & styling
- Iconic styling w/ reinforced high abrasion areas for superior durability
- Lightweight padded tongue & collar for added comfort & support
- Combination lacing system for improved fit & styling

OUTSOLE

- CLD VLC sole construction w/ traditional vulc wrap for maximum support & comfort
- Dual density blown PU RX insole w/ full latex covering for added durability & improved fit
- Compression molded EVA OG cush strobel construction for added comfort & increased flexibility
- Abrasion-resistant rubber outsole for increased wear, durability & ideal performance

TECH



SIZES

5-12, 13, 14



Ankle support strap detail



2040 BLK / CRL / WHT
S / SPL / M / **N**



2041 BLK / WHT / SNK
PL / SN / M / **2 N**



1138 BLU / WHT / SIL
SL / M / **2 N**



1881 BRG / GUM / GLD
L / M / **N**



2042 CHR / LEAF / BLK
L / M / **N**



2043 ARMY / BRN / WHT
L / M / **2 N**



2044 NVY / BRN / WHT / LOTTI
L / M / **N**

NYC 83

st-1130

UPPER

- Sandbuck, leather, action pebble grain, synthetic leather, synthetic nubuck, patent leather, mesh upper material(s) for added durability & styling
- Iconic styling w/ reinforced high abrasion areas for superior durability
- Lightweight padded tongue & collar for added comfort & support
- Combination lacing system for improved fit & styling

OUTSOLE

- Cupsole construction w/ exposed EVA midsole for maximum support & comfort
- Dual density blown PU RX Insole w/ full latex covering for added durability & improved fit
- Abrasion-resistant rubber outsole for increased wear, durability & ideal performance

TECH



CTRL

SIZES

5-12, 13, 14



1014 BLK / BLK / SIL
3M / M



2026 BLK / ORG / DIGI
L / SL / M



2027 BLK / DOT / FADE
PL / SN / M



2028 BLK / GRN / SEA
L / SN / M



2029 BLK / LKE / WHT
PL / SN / M



2030 BLK / PUR / SEA
PL / SN / M



2031 GRY / LME / CYN
SB / PL / M



1593 ORG / BLK / CYN
PL / SN / M



1998 SIL / BLU / RR-ALLEN
APG / SL / M



2032 BLK / SIL / TRI
L / 3M / M



lifestyle
collection

NYC 83 MID

st-1177

UPPER

- Leather, synthetic leather, miracle enamel, patent leather, mesh upper material(s) for added durability & styling
- Iconic styling w/ reinforced high abrasion areas for superior durability
- Lightweight padded tongue & collar for added comfort & support
- Combination lacing system for improved fit & styling

OUTSOLE

- Cupsole construction w/ exposed EVA midsole for maximum support & comfort
- Dual density blown PU RX Insole w/ full latex covering for added durability & improved fit
- Abrasion-resistant rubber outsole for increased wear, durability & ideal performance

TECH



CTRL

SIZES

5-12, 13, 14



2033 BLK / ORG / CHR
ME / SL / M 2



2034 CHR / BLK / LEAF
L / SL / M



2035 CHR / GRV / SEA
SL / PL / M 2



2036 RED / BLK / SNK
PL / SL / M



lifestyle
collection

NYC 83 SHR

st-1239

UPPER

- Ballistic rubber, leather, synthetic nubuck, leather, BOA & cosmo shearing upper material(s) for added durability & styling
- Iconic styling w/ reinforced high abrasion areas for superior durability
- Lightweight padded tongue & collar for added comfort & support
- Combination lacing system for improved fit & styling

OUTSOLE

- Cupsole construction w/ exposed EVA midsole for maximum support & comfort
- Dual density blown PU RX Insole w/ full latex covering for added durability & improved fit
- Abrasion-resistant rubber outsole for increased wear, durability & ideal performance

TECH



CTRL

SIZES

5-12, 13, 14



1528 BLK / GRV / BLK
BR / SN / SHR 2



1638 TAN / BLK / GUM
L / SHR 2



2037 GRV / BLU / CAMP
L / SHR



lifestyle
collection

NYC 83 MID SHR

st-1241

UPPER

- Ballistic rubber, leather, synthetic nubuck leather, BOA & cosmo shearing upper material(s) for added durability & styling
- Iconic styling w/ reinforced high abrasion areas for superior durability
- Lightweight padded tongue & collar for added comfort & support
- Combination lacing system for improved fit & styling

OUTSOLE

- Cupsole construction w/ exposed EVA midsole for maximum support & comfort
- Dual density blown PU RX Insole w/ full latex covering for added durability & improved fit
- Abrasion-resistant rubber outsole for increased wear, durability & ideal performance

TECH



CTRL

SIZES

5-12, 13, 14



1688 BLK / ORG / BLK
BR / SN / SHR / NY



2038 OLV / TAN / SHT
L / SHR 2 NY



2039 BLK / BLU / CAMP
L / SHR 2 NY



PRIMARY COLLECTION





THE CASWELL VLC
1255-149 BLK / WHT



THE CH2
1291-844 BLK / CHR / WHT



THE NYC83 VLC
1224-135 BLK / TAN / RED



THE CH2
1291-217 WHT / BLK / GUM



THE NYC83 VLC
1224-135 BLK / WHT / CHR



THE MITH
1283-104 BLK / BLK / WHT

CAMP COLLECTION

NYC83 MID SHR

1241-2039 BLK / BLU / CMP

NYC83 SHR

1239-2037 BLK / BLU / CMP



NYC 83 VLC

st-1224

UPPER

- Suede, sandbuck, synthetic leather, synthetic nubuck, ballistic nylon, canvas, ballistic rubber, mesh upper material(s) for added durability & styling
- Iconic styling w/ reinforced high abrasion areas for superior durability
- Lightweight padded tongue & collar for added comfort & support
- Combination lacing system for improved fit & styling

OUTSOLE

- CLD VLC sole construction w/ traditional vulc wrap for maximum support & comfort
- Dual density blown PU RX insole w/ full latex covering for added durability & improved fit
- Compression molded EVA OG cush strobel construction for added comfort & increased flexibility
- Abrasion-resistant rubber outsole for increased wear, durability & ideal performance

TECH



SIZES

5-12, 13, 14



2045 BLK / ORG / BLU
SB / SL / M / 1



2046 BLU / BLU / SEA
S / M / 2



2047 BLU / SIL / BLK
SN / SL / M / 1



2048 GRV / CHR / GUM
SN / M / 1



1803 GRV / RED / BLK
N / SL / M / 2



2049 PUR / LME / CHR
SB / SN / M / 2



2052 BLK / WHT / PATCH
C / M / 2



2051 BLK / WHT / RR - ZINK
BR / SN / M / 1



2053 BLK / GRN / MISHKA
PL / SN / M / 1



1114 BLK / WHT / CHR
SB / SAL / M / 2



135 BLK / TAN / RED
SB / SN / M / 1





lifestyle
collection

NYC 83 MID VLC

st-1280

UPPER

- Suede, sandbuck, synthetic nubuck, mesh upper material(s) for added durability & styling
- Iconic styling w/ reinforced high abrasion areas for superior durability
- Lightweight padded tongue & collar for added comfort & support
- Combination lacing system for improved fit & styling

OUTSOLE

- CLD VLC sole construction w/ traditional vulc wrap for maximum support & comfort
- Dual density blown PU RX insole w/ full latex covering for added durability & improved fit
- Compression molded EVA OG cush strobel construction for added comfort & increased flexibility
- Abrasion-resistant rubber outsole for increased wear, durability & ideal performance

TECH



SIZES

5-12, 13, 14



1133 BLK / BLK / RED
S / M 2



1566 BLU / BLK / LME
S / SN / M



2054 GRY / GVL / WHT
S / M 2



2055 GRY / ORG / BLK
SB / SN / M



PATCH COLLECTION

NYC83 VLC
1224-2052 BLK / WHT / PATCH



lifestyle
collection

PIXEL

st-1196

UPPER

- Action pebble grain, synthetic leather, synthetic nubuck, mesh upper material(s) for added durability & styling
- Technical skate styling w/ reinforced high abrasion areas for superior durability
- Traditional padded tongue & collar for added comfort & support
- Combination lacing system for added protection & styling

OUTSOLE

- 3/4 Cupsole construction w/ PU midsole & airbag for maximum support & comfort
- Dual density blown PU RX Insole w/ full latex covering for added durability & improved fit
- Compression molded EVA OG Cush strobel construction for added comfort & increased flexibility
- Abrasion-resistant rubber outsole for increased wear, durability & ideal performance

TECH



SIZES

5-12, 13, 14



1249 BLK / CHR / ORG
SN / M / NY



130 BLK / RED / WHT
APG / SN / M / 2 NY



1210 BLU / ORG / YEL
SL / SN / M / 2 NY



1423 CHR / GRV / NVY
APG / SN / M / NY



UPPER

- Synthetic leather, synthetic nubuck, action pebble grain, mesh upper material(s) for maximum performance
- Technical skate styling w/ reinforced high abrasion areas for superior durability
- Traditional padded tongue & collar for added comfort & support
- Combination lacing system for added protection & styling

OUTSOLE

- Cupsole construction featuring an EVA drop-in midsole w/ heel insert for added impact resistance
- Dual density blown PU RX insole w/ full latex covering for added durability & improved fit
- Compression molded EVA OG Cush strobel construction for added comfort & increased flexibility
- Abrasion-resistant rubber outsole for increased wear, durability & ideal performance

TECH



SIZES

5-12, 13, 14



2056 BLK / STL / WHT
SL / SN / M / N



1133 BLK / BLK / RED
SL / M / 2 N



137 BLK / WHT / BLK
APG / SL / M /



lifestyle
collection

TROMA REDUX

st-1217

UPPER

- Synthetic nubuck, synthetic leather, mesh upper material(s) for added durability & styling
- Classic skate styling w/ reinforced high abrasion areas for superior durability
- Traditional padded tongue & collar for added comfort & support
- Combination lacing system for added protection & styling

OUTSOLE

- Cupsole construction featuring an EVA drop-in midsole w/ heel insert for maximum support & comfort
- Dual density blown PU RX insole w/ full latex covering for added durability & improved fit
- Abrasion-resistant rubber outsole for increased wear, durability & ideal performance

TECH



CTRL

SIZES

5-12, 13, 14



117 BLK / GRV / WHT
SN / M /



1184 GRV / WHT / BLK
SN / M / 2



801 WHT / GRV / WHT
SL / M /



UPPER

- Suede, synthetic leather, synthetic nubuck, action pebble grain, canvas, mesh upper material(s) for added durability & styling
- Iconic styling w/ reinforced high abrasion areas for superior durability
- Lightweight padded tongue & collar for added comfort & support
- Combination lacing system for improved fit & styling

OUTSOLE

- CLD VLC sole construction w/ traditional vulc wrap for maximum support & comfort
- Dual density blown PU RX insole w/ full latex covering for added durability & improved fit
- Compression molded EVA OG cush strobel construction for added comfort & increased flexibility
- Abrasion-resistant rubber outsole for increased wear, durability & ideal performance

TECH



SIZES

5-12, 13, 14



2057 NVY / GRV / WHT
SN / M 2



2058 PNE / SEA / RR - NYQUIST
C / M 2



2059 WHT / BLK / RR-JONES
APG / SL / M 2



2060 BLK / WHT / HF
S / M 2



2061 BLK / WHT / BLU / LOTTI
S / C / M /



844 BLK / CHR / WHT
SN / M /



217 WHT / BLK / GUM
APG / SL / M /



CANVAS X BRIAN LOTTI

CREATING A NEW VISION AMONGST SURROUNDINGS

Brian Lotti is a cool artist and fan of skateboarding who is considered one of the most influential, technical, and stylish skateboarders of the late 80's early 90's.

Brian linked up with Osiris recently to create an original C.A.N.V.A.S collection based on artworks that each tell a story about skateboarding



SOPHISTIC
2020 BLK / CRM / LME / LOTTI
C

CANVAS X BRIAN LOTTI

CREATING A NEW VISION AMONGST SURROUNDINGS



CH2

2061 BLK / WHT / BLU / LOTTI
S / C / M

CANVAS X BRIAN LOTTI

CREATING A NEW VISION AMONGST SURROUNDINGS



Lotti X Osiris



RAIDER

2044 - NAVY / BRN / WHT / LOTTI
L / M



CUSTOM CLOTHING SINCE 1989

Osiris is proud to introduce the new Osiris x Horsefeathers collaboration for BTS 13. Launched in 1989 and based in the Czech Republic, Horsefeathers produces premium clothing and outerwear. The two companies share a similar ethos, so it was a natural fit when we decided to do a shoe and snowboard jacket collaboration. The need to produce only the finest quality product is paramount to both companies.

The final results reflect the collaborative commitment to authenticity and quality.



CH2

2060 BLK / WHT / HF
S / M



ATHOS ML623 A104



L'Amour Supreme

for

MILKA®

×

OSIRIS 

Lamovr Supreme
for
MILKA®
×
OSIRIS





MISHKA MONSTER MI600
A104 BLACK
A103 WHITE



MISHKA MONSTER RAGLAN MQ600
A117 BLACK / WHITE



MISHKA TYPO MI618
A315 LIME
A104 BLACK



MISHKA TYPO MK618
A104 BLACK
A315 LIME



MISHKA MONSTER MV600
A120 HEATHER
A104 BLACK



RIDER REVOLT

TEAM COLLABORATION SERIES
BY
**RON
ALLEN**

The H-Street Skateboard Company was formed in 1986 by professional skateboarder Tony Mag and Mike Ternasky. Inspired by Powell's success in making skateboard videos, without any large film budget available, Tony and Mike started making skateboard videos with inexpensive VHS cameras and editing them at home. H-Street would eventually produce five major videos, with such notable skaters as Tony Mag, Matt Hensley, Danny Way, Ron Allen, Eric Koston, Mike Carroll, Jason Rogers, Colby Carter, John Schultes, Chad Vogt and many other top pros of the era.



NYC 83 VLC
1130-1998 - SIL / BLU / RR - ALLEN
APG / SL / M



Jay Adams prominently known as one of the original members of Z-Boys skateboarding team. Born and raised in Venice Beach, aka Dogtown he is considered one of the most influential skateboarders of all time and the original seed. Osiris salutes and respects the roots of Jay's skateboarding legacy with this Rider Revolt shoe.



EFFECT

1279-2017 BLK / BLK / RR - ADAMS
S / M



RIDER REVOLT

TEAM COLLABORATION SERIES

BY

LETICIA BUFONI

Leticia Bufoni, originally from Sao Paulo, Brazil, came to Southern California at the age of 14, where she kicked off her skateboarding career immediately jumping into the competition. She is a unique blend of world-class athlete with girl-next-door charm and her passion for skateboarding does not go unnoticed. With an extensive list of accomplishments, including 1st place in the 2012 World Cup, 1 Bronze and 2 Silver medals at the X Games and dual 1st-place wins at the Maloof Money Cup, Leticia is a great asset to the Osiris skate team.



DECAY

1291-2014 BLK / WHT / RR - LETICIA
S / M



Born in Warrendale Pennsylvania, Adam Jones first got on a motorcycle at age 10 when his parents bought him a 1980 kx 80, with which his talents quickly shined. After moving into the professional FMX world at age 17, Adam rarely competed in an event in which he didn't make the podium.

After conquering an injury battle in 2004, he quickly returned to competing and has since made a strong name for himself. Jones has invented numerous tricks including the Cordova flip, Stripper flip, Shaolin flip and Corpse flip. As a four-time X-Games Medalist, and with prestigious awards such as International Rider of the Year (2007), Transworld Motocross Rider of the Year (2007) and AST Dew Tour Champion (2008, 2012), Jones' passion for riding and intense work ethic are not hard to recognize.



CH2

1291-2059 WHT / BLK / RR - JONES
APG / SL / M



RIDER REVOLT

TEAM COLLABORATION SERIES

BY

CAMERON ZINK

Hailing from Reno, Nevada, Osiris MTB pro Cam Zink is truly at the forefront of pushing his sport to the next level. Whether it's nailing the worlds largest backflip in Utah or pioneering uncharted trails in China, Cam has it all. When he drops in, you can expect mind-blowing riding or horrendous crashes. Either way, you're going to want to pay attention.



NYC 83 VLC
1224-2051 BLK / WHT / RR - ZINK
BR / SN / M



TEAM COLLABORATION SERIES

**RYAN
NYQUIST**

A household name in both BMX dirt and park, Ryan Nyquist started riding at the age of three and competed in his first BMX freestyle competition when he was 16.

Competing in his first X Games at the age of 18, Nyquist has been a BMX legend ever since. By 2003, he had won every major dirt competition — X Games, Gravity Games, Vans Triple Crown, and the King of Dirt.

A staple on the competition circuit for more than a decade, Nyquist's consistency has put him in the top five in the Dew Tour's year-end rankings in both disciplines every year. The winner of 13 total X Games medals in both park and dirt — including an X Games record of nine medals in dirt — Nyquist's accomplishments earned him an ESPY for Best Action Sports Athlete as well as the title of BMX Plus! Dirt Jumper of the Year in 2004. Ryan recently capped the year off by winning the Dew Tour championships in San Francisco.

CH2

1291-2058 PNE / SEA / RR - NYQUIST
C / M

UPPER

- Synthetic nubuck, synthetic leather, mesh upper material(s) for added durability & styling
- Iconic styling w/ reinforced high abrasion areas for superior durability
- Traditional padded tongue & collar for added comfort & support
- Combination lacing system for improved fit & styling

OUTSOLE

- Cupsole construction featuring an EVA drop-in midsole w/ heel insert for maximum support & comfort
- Dual density blown PU RX insole w/ full latex covering for added durability & improved fit
- Abrasion-resistant rubber outsole for increased wear, durability & ideal performance

TECH



SIZES

5-12, 13, 14



1808 CHR / GRV / ORG
SN / M 2 **N**



107 BLK / CHR / BLK
SN / M /



137 BLK / WHT / BLK
SN / M 2



1455 WHT / WHT / GRV
SN / M /



UPPER

- Canvas upper material for added durability & styling
- Classic skate styling w/ reinforced high abrasion areas for superior durability
- Lightweight padded tongue & collar for added comfort & support
- Combination lacing system for improved fit & styling

OUTSOLE

- CLD VLC sole construction w/ traditional vulc wrap for maximum support & comfort
- Dual density blown PU RX insole w/ full latex covering for added durability & improved fit
- Compression molded EVA OG cush strobel construction for added comfort & increased flexibility
- Abrasion-resistant rubber outsole for increased wear, durability & ideal performance

TECH



SIZES

5-12, 13, 14



1177 BLK / BLK / CHR
C / C 2



103 BLK / BLK / GUM
C / C /



1527 NVY / NVY / WHT
C / C 2



1975 RED / RED / WHT
C / C 2

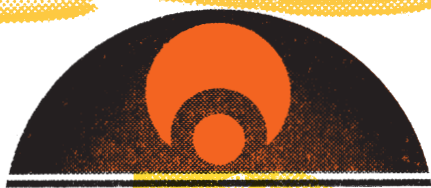
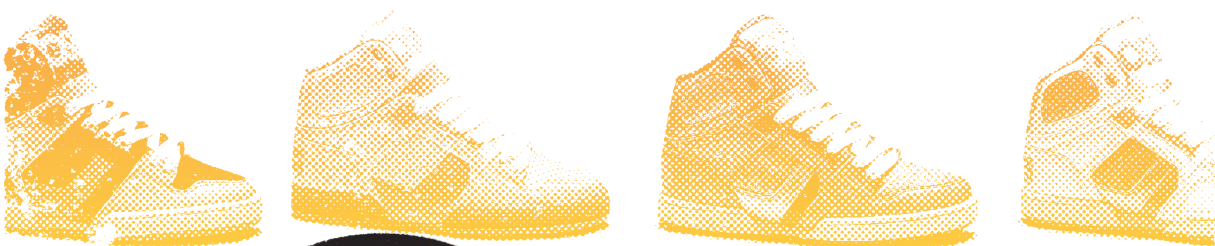
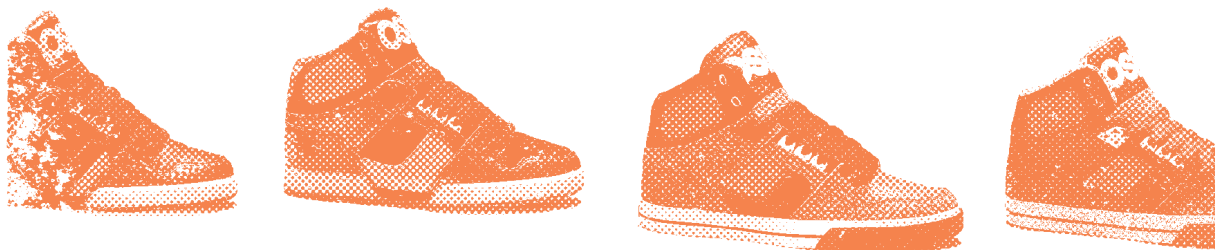
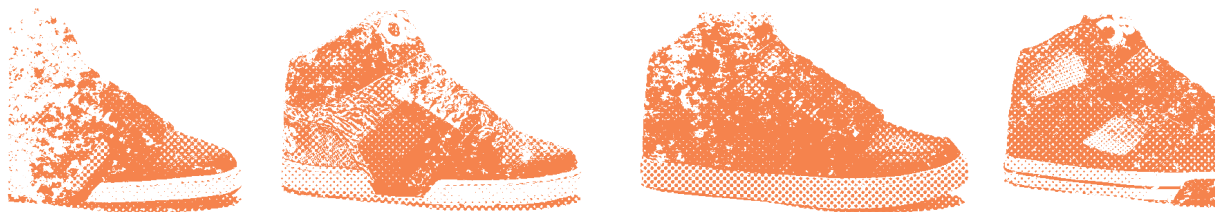


1976 STL / STL / WHT
C / C /



104 BLK / BLK / WHT
C / C /





GIRLS COLLECTION

NYC83 SLM / NYC83 MID
NYC83 SHR / NYC83 VLC

girls
collection

NYC 83 SLM

st-2192

UPPER

- Synthetic nubuck, miracle enamel, patent leather, 3M, mesh upper material(s), fashion forward styling
- Traditional padded tongue & collar for added comfort & support
- Combination lacing system for improved fit & styling

OUTSOLE

- Cupsole construction w/ exposed EVA midsole for maximum support & comfort
- Dual density blown PU RX insole w/ full latex covering for added durability & improved fit
- Abrasion-resistant rubber outsole for increased wear, durability & ideal performance

TECH



SIZES

5-11



1069 BLK / PNK / SIL
PL / SN / M 2



2062 BLK / PNK / BLU
PL / SN / M



1939 GRN / PNK / PUR
PL / SN / M 2



2063 WHT / BLU / CHEETAH
ME / SPL / M



2070 BLU / SIL / LME
PL / ME / M



2071 WHT / PNK / GLD
PL / ME / M 2



SEQUINS COLLECTION

NYC83 SLM

2192-2070 BLU / SIL / LME

NYC83 SLM

2192-2071 WHT / PNK / GLD



girls
collection

NYC 83 MID

st-2177

UPPER

- Nubuck, synthetic nubuck, synthetic leather, patent leather, mesh upper material(s), fashion forward styling
- Traditional padded tongue & collar for added comfort & support
- Combination lacing system for improved fit & styling

OUTSOLE

- Cupsole construction w/ exposed EVA midsole for maximum support & comfort
- Dual density blown PU RX insole w/ full latex covering for added durability & improved fit
- Abrasion-resistant rubber outsole for increased wear, durability & ideal performance

TECH



CTRL

SIZES

5-11



1790 BLK / LME / PUR
N / PL / M / **2**



1056 BLU / PNK / WHT
PL / SL / M / **2**



2065 GRY / BLK / PNK
PL / SN / M / **2**



2066 PNK / BLK / PUR
PL / SN / M / **2**



ANIMAL COLLECTION

THE NYC83 VLC

2224-1067 BLK / PNK / CYN

THE NYC83 VLC

2224-1055 WHI / CYN / PNK



girls
collection

NYC 83 SHR

st-2239

UPPER

- Leather, nubuck, action pebble grain, BOA & cosmo shearling upper material(s), fashion forward styling
- Traditional padded tongue & collar for added comfort & support
- Combination lacing system for improved fit & styling

OUTSOLE

- Cupsole construction w/ exposed EVA midsole for maximum support & comfort
- Dual density blown PU RX insole w/ full latex covering for added durability & improved fit
- Abrasion-resistant rubber outsole for increased wear, durability & ideal performance

TECH



SIZES

5-11



1949 BLU / BLK / PNK
APG / N / SHR 2



2067 BLU / BLK / TEAL
L / SHR



2068 PNK / BLK / CHEETAH
L / SHR 2



girls
collection

NYC 83 VLC

st-2224

UPPER

- Patent leather, synthetic leather, synthetic nubuck, mesh upper material(s), fashion forward styling
- Iconic styling w/ reinforced high abrasion areas for superior durability
- Lightweight padded tongue & collar for added comfort & support
- Combination lacing system for improved fit & styling

OUTSOLE

- CLD VLC sole construction w/ traditional vulc wrap for maximum support & comfort
- Dual density blown PU RX insole w/ full latex covering for added durability & improved fit
- Compression molded EVA OG cush strobel construction for added comfort & increased flexibility
- Abrasion-resistant rubber outsole for increased wear, durability & ideal performance

TECH



SIZES

5-11



1055 BLK / PNK / CYN
PL / SL / M 2



1056 BLU / PNK / WHT
PL / SL / M 2

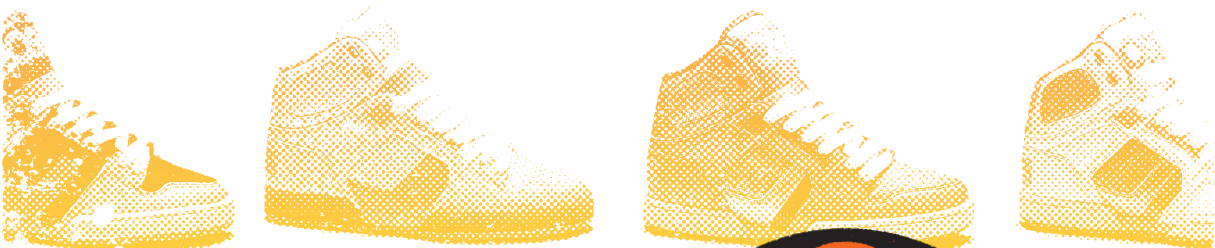
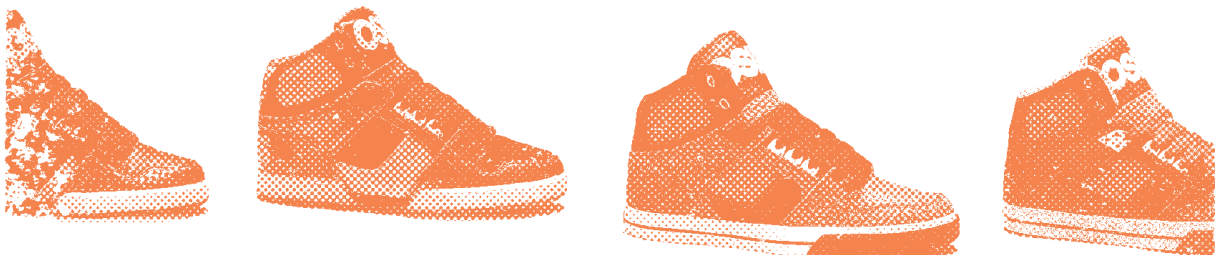
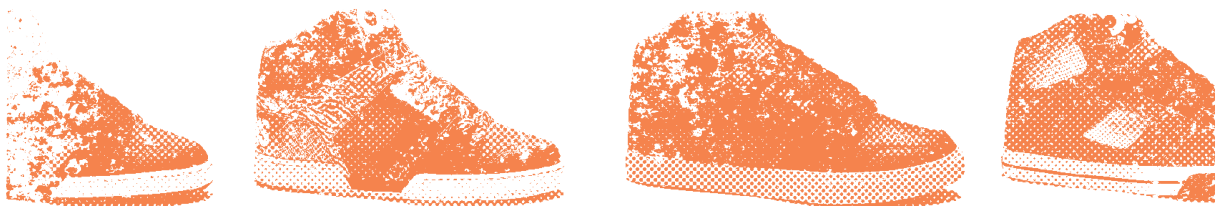


2069 PUR / BLK / GRN
PL / SN / M



1067 WHT / CYN / PNK
PL / 3M / M





KIDS COLLECTION

NYC83 / NYC83 VLC

NYC83 SLM

kids
collection

KIDS NYC 83

st-3130

UPPER

- Sandbuck, leather, action pebble grain, synthetic leather, synthetic nubuck, patent leather, mesh upper material(s), for added durability & styling
- Iconic styling w/ reinforced high abrasion areas for superior durability
- Lightweight padded tongue & collar for added comfort & support
- Combination lacing system for improved fit & styling

OUTSOLE

- Cupsole construction w/ exposed EVA midsole for maximum support & comfort
- Soft EVA insole w/ full latex covering for added durability & improved fit
- Abrasion-resistant rubber outsole for increased wear, durability & ideal performance

SIZES

11, 12, 13, 1, 2, 3, 4, 5, 6



2027 BLK / DOT / FADE
PL / SN / M / 



2028 BLK / GRN / SEA
L / SN / M / 



2029 BLK / LKE / WHT
PL / SN / M / 



2030 BLK / PUR / SEA
PL / SN / M / 



2031 GRY / LME / CYN
SB / PL / M / 



1593 ORG / BLK / CYN
PL / SN / M / 



kids
collection

KIDS NYC 83 VLC

st-3224

UPPER

- Suede, sandbuck, synthetic leather, synthetic nubuck, ballistic nylon, canvas, ballistic rubber, mesh upper material(s), for added durability & styling
- Iconic styling w/ reinforced high abrasion areas for superior durability
- Lightweight padded tongue & collar for added comfort & support
- Combination lacing system for improved fit & styling

OUTSOLE

- Vulcanized sole construction w/ traditional vulc wrap for maximum support & comfort
- Soft EVA insole w/ full latex covering for added durability & improved fit
- Abrasion-resistant rubber outsole for increased wear, durability & ideal performance

SIZES

11, 12, 13, 1, 2, 3, 4, 5, 6



2045 BLK / ORG / BLU
SB / SL / M / 



2047 BLU / SIL / BLK
SN / SL / M / 



1803 GRY / RED / BLK
N / SL / M / 



2049 PUR / LME / CHR
SB / SN / M / 



KIDS NYC 83 SLM

st-4192

UPPER

- Synthetic nubuck, miracle enamel, patent leather, 3M, mesh upper material(s), fashion forward styling
- Iconic styling w/ reinforced high abrasion areas for superior durability
- Traditional padded tongue & collar for added comfort & support
- Combination lacing system for improved fit & styling

OUTSOLE

- Cupsole construction w/ exposed EVA midsole for maximum support & comfort
- Soft EVA insole w/ full latex covering for added durability & improved fit
- Abrasion-resistant rubber outsole for increased wear, durability & ideal performance

SIZES

11, 12, 13, 1, 2, 3, 4, 5, 6



1069 BLK / PNK / SIL
PL / SN / M / 



2062 BLK / PNK / BLU
PL / SN / M / 



1939 GRN / BLK / PUR
PL / SN / M / 



2063 WHT / BLU / CHEETAH
ME / SPL / M / 

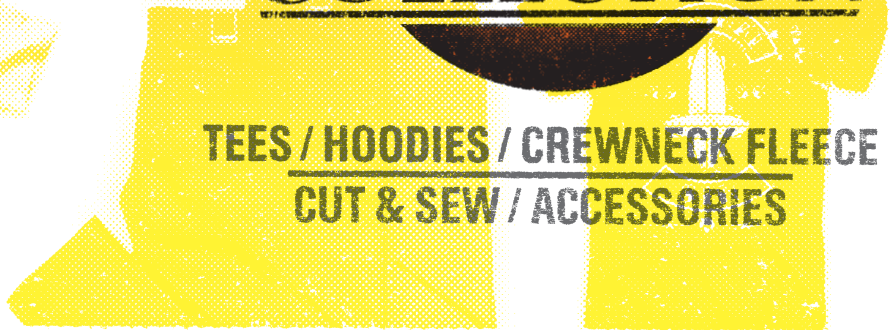
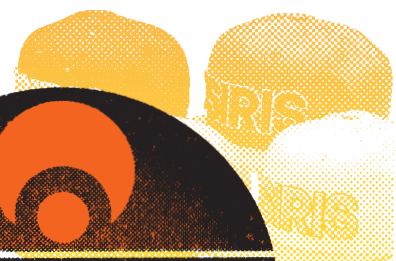


2070 BLU / SIL / LME
PL / ME / M / 



2071 WHT / PNK / GLD
PL / ME / M / 





SOFTGOODS COLLECTION

TEES / HOODIES / CREWNECK FLEECE
CUT & SEW / ACCESSORIES

premium
GRAPHIC TEES

4.3 oz. combed 100% ringspun cotton. Double needle bottom hem and sleeves.
Pre-shrunk to minimize shrinkage. Machine washable. Available Sizes S.M.L.XL.XXL



COSMO MI597 
A226 BLACK/TEAL
A163 BLACK/PURPLE
A124 BLACK/GOLD



MC MI598 
A120 HEATHER GREY
A104 BLACK
A347 POWDER BLUE



SPACE BIKINI MI599 
A103 WHITE
A104 BLACK
A120 HEATHER GREY



COMMERCIAL MI586
A104 BLACK
A116 CHARCOAL
A103 WHITE





MISHKA MONSTER MI600 
A104 BLACK
A103 WHITE



MISHKA MONSTER RAGLAN MQ600 
A117 BLACK / WHITE



LOTTIVX MI601 
A347 POWDER BLUE
A103 WHITE



LOTTIMARLIN MI602 
A103 WHITE
A120 HEATHER GREY

GRAPHIC TEES

5.5 oz. 100% super-soft tubular tee. Double needle bottom hem and sleeves.
Pre-shrunk to minimize shrinkage. Machine washable. Available Sizes S.M.L.XL.XXL




ACRYLIC MI603 
A347 POWDER BLUE
A104 BLACK
A103 WHITE



ANTHEM MI604 
A120 HEATHER GREY
A103 WHITE
A104 BLACK




BAKED MI605 
A108 RED
A104 BLK
A195 ROYAL



CLEOPATRA MI606 
A120 HEATHER GREY
A103 WHITE
A112 MILITARY GREEN



COBRA MI607 
A194 CARDINAL
A104 BLACK
A120 HEATHER GREY




DINO MI608 
A213 TURQUOISE
A108 RED
A116 CHARCOAL



DJ OCTO MI609 
A103 WHITE
A104 BLACK
A108 RED



FILLER MI610 
A105 NAVY
A103 WHITE
A104 BLACK

GRAPHIC TEES

5.5 oz. 100% super-soft tubular tee. Double needle bottom hem and sleeves.
Pre-shrunk to minimize shrinkage. Machine washable. Available Sizes S.M.L.XL.XXL



GET UP MI611 
A116 CHARCOAL
A103 WHITE
A104 BLACK



GLAM MI612 
A103 WHITE
A347 POWDER BLUE
A116 CHARCOAL



HOOLIGAN MI613 
A116 CHARCOAL
A104 BLACK
A213 TURQUOISE



JOCK MI614 
A277 KELLY GREEN
A103 WHITE
A104 BLACK





RAILS MI615 
A116 CHARCOAL
A103 WHITE
A104 BLACK



ORIGINALSIN MI616 
A104 BLACK
A108 RED
A103 WHITE



TAGS MI617 
A168 YELLOW
A104 BLACK
A108 RED



MISHKA TYPO MI618 
A315 LIME
A104 BLACK

GRAPHIC TEES

5.5 oz. 100% super-soft tubular tee. Double needle bottom hem and sleeves.
Pre-shrunk to minimize shrinkage. Machine washable. Available Sizes S.M.L.XL.XXL



CORPORATE MI273

106 PURPLE	116 CHARCOAL
103 WHITE	213 TURQUOISE
104 BLACK	108 RED



NYC MI577

A146 SILVER	A105 NAVY
A104 BLACK	A106 PURPLE
A213 TURQUOISE	A315 LIME



TEAM MI524

A108 RED A146 SILVER
A104 BLACK A105 NAVY
A213 TURQUOISE A116 CHARCOAL



DRIPS MI587

A353 CHARCOAL / OPAL
A354 TURQUOISE / ORANGE
A352 BLACK / REF

STATIC MI573

A352 BLACK / REF
A355 SILVER / PURPLE
A356 WHITE / LIME

ZIP HOODS

8.5oz 80-20 cotton/poly blend fleece, ultra soft hand feel and fitted spec.
Available sizes: S, M, L, XL



DINO MK608 N
A348 ROYAL HEATHER
A120 HEATHER GREY



HOOLIGAN MK613 N
A104 BLACK
A116 CHARCOAL



MC MK598 N
A108 RED
A259 CHARCOAL HEATHER



ORIGINALSIN MK616 N
A120 HEATHER GREY
A259 CHARCOAL HEATHER



MISHKATYPO MK618 N
A104 BLACK
A315 LIME



NYC MK577

A315 LIME	A104 BLACK
A213 TURQUOISE	A105 NAVY
A108 RED	A106 PURPLE



TEAM MK524


A213 TURQUOISE	A105 NAVY
A104 BLACK	A108 RED
A259 CH. HTHR	A179 GUNMETAL

CREWNECK FLEECE


8.5oz 80-20 cotton/poly blend fleece, ultra soft hand feel and fitted spec.
Available sizes: S, M, L, XL



ACRYLIC MV603 
A348 ROYAL HEATHER
A120 HEATHER

ANTHEM MV604 
A104 BLACK
A348 ROYAL HEATHER



BAKED MV605 
A349 NAVY HEATHER
A104 BLACK

SPACE BIKINI MV599 
A120 HEATHER
A104 BLACK



MISHKA MONSTER MV600 
 A120 HEATHER
 A104 BLACK



LOTTIVX MV601 
 A120 HEATHER

TOPS & DENIM



CROSBY MT591

MEN'S KNIT POLO
38% COTTON 50% POLY 12% RAYON
S-M-L-XL

A104 BLACK
A195 ROYAL
A108 RED



MAIDEN MU593

MEN'S 3/4 SLEEVE HENLEY
38% COTTON 50% POLY 12% RAYON
S-M-L-XL

A263 HEATHER / BLACK
A339 HEATHER / GREEN



FLEETWOOD M0584

MEN'S FLANNEL
100% COTTON
SOLD AS SINGLES
S-M-L-XL

A333 TURQUOISE / BLACK
A334 MAGENTA / TEAL



RIO ML583

MEN'S WINDBREAKER JACKET
100% POLY
SOLD AS SINGLES
S-M-L-XL

A104 BLACK
A111 GREY

TOPS & DENIM



JUDAS MQ594

MEN'S RAGLAN CREW SWEATER
73% COTTON 27% POLY
S-M-L-XL

A263 HEATHER / BLACK
A340 HEATHER / ROYAL
A341 HEATHER / RED



ATHOS ML623

100% POLY OTTOMAN
WATER REPELLENT LAMINATED MEMBRANE
5mm WATERPROOFNESS
5gm BREATHABILITY
XS, S, M, L, XL, XXL

A104 BLACK
80g BODY INSULATION
100% NYLON TAFFETA LINING
CRITICALLY TAPED SEAMS
ARMPIT VENTS WITH MESH BACKING
AUDIO POCKET
ELASTIC SNOWSKIRT
JACKET-PANT CONNECTORS
POCKET KEYCHAIN
ONE HAND FRONT HOOD ADJUSTMENT



DIO MM581

MEN'S SLIM FIT
98% COTTON 2% POLY
SOLD AS SINGLES
30, 32, 34, 36, 38

A104 BLACK
A262 INDIGO
A361 RAW



NYCLTD SNAPBACK MA620 N

97% COTTON 3% POLY
ONE SIZE FITS MOST
SOLD AS SINGLE



A121 BLACK / PINK A350 GREY / LIME A351 GREY / PURPLE A182 WHITE / CYAN

PHASE FLEXFIT MA619 N

97% COTTON 3% POLY
ONE SIZE FITS MOST
SOLD AS SINGLE



A160 BLACK / CYAN A190 CYAN / BLACK A196 BLACK / LIME

NYCSNAPBACK MA577

97% COTTON 3% POLY
ONE SIZE FITS MOST
SOLD AS SINGLE



A213 TURQUOISE A106 PURPLE A104 BLACK A108 RED A231 ORANGE A315 LIME A105 NAVY A116 CHARCOAL

STANDARD SNAPBACK MA395

97% COTTON 3% POLY
ONE SIZE FITS MOST
SOLD AS SINGLE



A343 TURQUOISE A106 PURPLE A104 BLACK A128 RED A231 ORANGE A315 LIME A105 NAVY A116 CHARCOAL

ACCESSORIES

POM POM MB578

100% COTTON
ONE SIZE FITS MOST
SOLD AS SINGLE
A132 RED / BLACK



ANKLET ME553

73% COTTON 15% SPANDEX
6% POLYAMIDE 6% ELASTANE
SIZE 8-11, 12-16
SOLD AS SINGLE
A314 CHARCOAL / STRIPE



STANDARD ME101

73% COTTON 15% SPANDEX
6% POLYAMIDE 6% ELASTANE
SIZE 8-11, 12-16
SOLD AS SINGLE
A147 WHITE / BLACK



IGYLE ME554

73% COTTON 15% SPANDEX
6% POLYAMIDE 6% ELASTANE
SIZE 8-11, 12-16
SOLD AS SINGLE
A104 BLACK



PHONEBOOK PF622 N

A104 BLACK



ICON MG107

A160 BLACK / CYAN



OVERVIEW

DUFFEL VLC 1256



141 BLK / WHT / GUM
AL / S / M **N1**

CASWELL VLC 1255



1523 BLK / RED / BLK
S / M **N2**

BINGAMAN VLC 1289



2008 BLK / SHT / WHT
S / SN / M **N2**

PLG VLC 1292



141 BLK / WHT / GUM
C / M **N2**

CHAVETA 1264



2010 BLK / BLK / CRM
S / M **N2**

DECAY 1264



1580 BLU / BLU / WHT
S / C / M **N2**



2005 CHR / GRY / GRY
S / M **N1**



1580 BLU / BLU / WHT
C / M **N1**



146 BLK / WHT / RED
SN / M **N1**



1164 BLK / WHT / LME
S / SN / M **N1**



2011 CHR / PNE / GLD
S / W / M **N1**



2013 BLK / WHT / RED
S / C / M **N1**



2006 TEAL / TAN / WHT
C / M **N2**



1648 GRY / CHR / WHT
S / M **N2**



2009 PUR / GLD / WHT
S / M **N1**



1580 BLU / BLU / WHT
S / SL / M **N2**



2012 GRY / BRN / NAT
S / SL / M **N2**



2014 BLK / WHT / RR-LETICIA
S / M **N2**



2007 BLK / BLK / TOP
SB / M **N2**



2007 BLK / BLK / TOP
SB / M **N1**



2007 BLK / BLK / TOP
SB / M **N2**



2007 BLK / BLK / TOP
SB / M **N1**



BTS13
MATERIAL
CODE LEGEND

3M - REFLECTIVE
AL - ACTION LEATHER
ANB - ACTION NUBUCK
PU-CL - PU COATED LEATHER
S - SUEDE
SAL - SYNTHETIC ACTION LEATHER

APG - ACTION PEBBLE GRAIN
BN - BALLISTIC NYLON
C - CANVAS
SAPG - SYNTHETIC ACTION PEBBLE GRAIN
SB - SANDBUCK
SL - SYNTHETIC LEATHER

D - DENIM
DB - DANBUCK
FGL - FULL GRAIN LEATHER
SLP - SYNTHETIC PATENT LEATHER
SN - SYNTHETIC NUBUCK
SS - SYNTHETIC SUEDE

L - LEATHER
M - MESH
ME - MIRACLE ENAMEL
T - TWILL
TPR - THERMAL PLASTIC RUBBER
TPU - THERMAL PLASTIC URETHANE

N - NUBUCK
NN - NOBEL NUBUCK
NY - NYLON
PGL - PIG LEATHER
PL - PATENT LEATHER
PS - PIG SUEDE



EFFECT 1279



835 BLK / GRV / LME
C / M 



2015 GRV / TAN / WHT
W / M 



2016 NAVY / WHT / PNK
S / M 



2017 BLK / BLK / ADAMS
S / M 

RHYMERMX 1238



1863 BLK / CRM / PNK
N / PL 



2018 BLK / GRN / GLD
S / APG / PL 

GROUNDS 1252



1042 BLK / OPL / WHT
C / SL / M 



315 BLK / WHT / BRG
NY / M 



163 BRN / TAN / WHT
S / M 

SPOHISTIC 1288



2019 CHR / BRN / TAN
W 



2020 BLK / CRM / LME / LOTTI
C 



1177 BLK / BLK / CHR
S / L 



1936 SHT / RED / CRM
S 2

CONVERT 1290



1874 BLK / BLK / GRV
CRD 



1534 GRV / BLK / GUM
W 



1968 BLK / GUM / MULTI
S 



1970 GRV / CRM / MULTI
S 2

CURRENCY 1298



1236 BLK / BLK / BLK
S / SL / SP 



2021 BRG / CRM / TAN
L / SP 



329 BRN / TAN / CRM
L / SHR 



2022 GRV / BRN / WHT
W / SL / SP 

CANVAS

OVERVIEW

RUCKER 1295	L2 1299	LOOT 1282	PROTOCOL 1293	STRAY 1294	RAIDER 1296
					
107 BLK / CHR / BLK SL / PL / M N2	1953 BLK / LME / BLU N / SL / M N1	1177 BLK / BLK / CHR SN / M N1	104 BLK / BLK / WHT SN / M N1	104 BLK / BLK / WHT SN / M N1	2040 BLK / CRL / WHT S / SPL / M N1
					
1249 BLK / CHR / ORG SN / SL / M N1	2024 BLK / OCN / CHR N / SL / M N2	844 BLK / CHR / WHT SN / M N2	951 BLU / BLK / WHT SN / M N1	2084 NRV / BLU / GRN C / C N2	2041 BLK / WHT / SNK PL / SN / M N2
					
1746 BLK / CHR / SEA SL / M N2	137 BLK / WHT / BLK N / SL / M N1	801 WHT / GRY / WHT SL / M N2	607 RED / BLK / WHT SN / M N2	2085 RED / ORG / PUR C / C N1	1138 BLU / WHT / SIL SL / M N2
					
117 BLK / GRY / WHT SL / M N1	2025 BLU / OPL / BLK SN / SL / M N1				1881 BRG / GUM / GLD L / M N1
					
2023 CHR / GRN / PUR PL / SN / M N1	1246 GRY / BLK / RED SN / SL / M N2				2042 CHR / LEAF / BLK L / M N1
					
1244 CHR / RED / BLK SN / M N2	763 WHT / PUR / BLK APG / SL / M N2				2043 ARMY / BRN / WHT L / M N2
					
					
					2044 NRV / BRN / WHT / LOTTI L / M N1

3M - REFLECTIVE	APG - ACTION PEBBLE GRAIN	D - DENIM	L - LEATHER	N - NUBUCK
AL - ACTION LEATHER	BN - BALLISTIC NYLON	DB - DANBUCK	M - MESH	NN - NOBEL NUBUCK
ANB - ACTION NUBUCK	C - CANVAS	FGL - FULL GRAIN LEATHER	ME - MIRACLE ENAMEL	NY - NYLON
PUCL - PU COATED LEATHER	SAPG - SYNTHETIC ACTION PEBBLE GRAIN	SLP - SYNTHETIC PATENT LEATHER	T - TWILL	PGL - PIG LEATHER
S - SUEDE	SB - SANDBUCK	SN - SYNTHETIC NUBUCK	TPR - THERMAL PLASTIC RUBBER	PL - PATENT LEATHER
SAL - SYNTHETIC ACTION LEATHER	SL - SYNTHETIC LEATHER	SS - SYNTHETIC SUEDE	TPU - THERMAL PLASTIC URETHANE	PS - PIG SUEDE

NYC83 1130



1014 BLK / BLK / SIL
3M / M 



1593 ORG / BLK / CYN
PL / SN / M 

NYC83 MID 1177



2033 BLK / ORG / CHR
ME / SL / M 

NYC83 SHR 1239



1528 BLK / GRY / BLK
BR / SN / SHR 

NYC83 MID SHR 1241



1688 BLK / ORG / BLK
BR / SN / SHR 



2026 BLK / ORG / DIGI
L / SL / M 



1998 SIL / BLU / RR-ALLEN
APG / SL / M 



2034 CHR / BLK / LEAF
L / SL / M 



1638 TAN / BLK / GUM
L / SHR 



2038 OLV / TAN / SHT
L / SHR 



2027 BLK / DOT / FADE
PL / SN / M 



2032 BLK / SIL / TRI
L / 3M / M 



2035 CHR / GRY / SEA
SL / PL / M 



2037 GRY / BLU / CAMP
L / SHR 



2039 BLK / BLU / CAMP
L / SHR 



2028 BLK / GRN / SEA
L / SN / M 



2036 RED / BLK / SNK
PL / SL / M 



2029 BLK / LKE / WHT
PL / SN / M 



2030 BLK / PUR / SEA
PL / SN / M 



2031 GRY / LME / CYN
SB / PL / M 

OVERVIEW

NYC83 VLC 1224



2045 BLK / ORG / BLU
SB / SL / M **N1**



2051 BLK / WHT / RR - ZINK
BR / SN / M **N2**



NYC83 MIDVLC 1280 PIXEL 1196



1133 BLK / BLK / RED
S / M **N2**



1249 BLK / CHR / ORG
SN / M **N1**

CINUX 1251



2056 BLK / STL / WHT
SL / SN / M **N1**



2046 BLU / BLU / SEA
S / M **N2**



2053 BLK / GRN / MISHKA
PL / SN / M **N1**



1566 BLU / BLK / LME
S / SN / M **N1**



130 BLK / RED / WHT
APG / SN / M **N2**



1133 BLK / BLK / RED
SL / M **N2**



2047 BLU / SIL / BLK
SN / SL / M **N1**



1114 BLK / WHT / CHR
SB / SAL / M **2**



2054 GRY / GVL / WHT
S / M **N2**



1210 BLU / ORG / YEL
SL / SN / M **N2**



137 BLK / WHT / BLK
APG / SL / M **1**



2048 GRY / CHR / GUM
SN / M **N1**



135 BLK / TAN / RED
SB / SN / M **1**



2055 GRY / ORG / BLK
SB / SN / M **N1**



1423 CHR / GRY / NVY
APG / SN / M **N1**



1803 GRY / RED / BLK
N / SL / M **N2**



2049 PUR / LME / CHR
SB / SN / M **N2**



2052 BLK / WHT / PATCH
C / M **N1**



BTS13
MATERIAL
CODE LEGEND

3M - REFLECTIVE
AL - ACTION LEATHER
ANB - ACTION NUBUCK
PU-CL - PU COATED LEATHER
S - SUEDE
SAL - SYNTHETIC ACTION LEATHER

APG - ACTION PEBBLE GRAIN
BN - BALLISTIC NYLON
C - CANVAS
SAPG - SYNTHETIC ACTION PEBBLE GRAIN
SB - SANDBUCK
SL - SYNTHETIC LEATHER

D - DENIM
DB - DANBUCK
FGL - FULL GRAIN LEATHER
SLP - SYNTHETIC PATENT LEATHER
SN - SYNTHETIC NUBUCK
SS - SYNTHETIC SUEDE

L - LEATHER
M - MESH
ME - MIRACLE ENAMEL
T - TWILL
TPR - THERMAL PLASTIC RUBBER
TPU - THERMAL PLASTIC URETHANE

N - NUBUCK
NN - NOBEL NUBUCK
NY - NYLON
PGL - PIG LEATHER
PL - PATENT LEATHER
PS - PIG SUEDE

TROMAREDEX 1217



117 BLK / GRY / WHT
SN / M **N2**

CH2 1291



2057 NVY / GRY / WHT
SN / M **N2**

RELIC 1268



1808 CHR / GRY / DRG
SN / M **N2**

MITH 1238



1177 BLK / BLK / CHR
C / C **N2**

GIRLSNYC83 2192



1069 BLK / PNK / SIL
PL / SN / M **N2**

GIRLSNYC83 MID 2177



1790 BLK / LME / PUR
N / PL / M **N2**



1184 GRY / WHT / BLK
SN / M **N2**



2058 PNE / SEA / RR-NYQUIST
C / M **N2**



107 BLK / CHR / BLK
SN / M **I**



103 BLK / BLK / GUM
C / C **I**



2062 BLK / PNK / BLU
PL / SN / M **N2**



1056 BLU / PNK / WHT
PL / SL / M **N2**



801 WHT / GRY / WHT
SL / M **N2**



2059 WHT / BLK / RR-JONES
APG / SL / M **N2**



137 BLK / WHT / BLK
SN / M **2**



1527 NVY / NVY / WHT
C / C **2**



1939 GRN / PNK / PUR
PL / SN / M **N2**



2065 GRY / BLK / PNK
PL / SN / M **N2**



2060 BLK / WHT / HF
S / M **N2**



1455 WHT / WHT / GRY
SN / M **I**



1975 RED / RED / WHT
C / C **2**



2063 WHT / BLU / CHEETAH
ME / SPL / M **N2**



2066 PNK / BLK / PUR
PL / SN / M **N2**



2061 BLK / WHT / BLU / LOTTI
S / C / M **N2**



1976 STL / STL / WHT
C / C **I**



2070 BLU / SIL / LME
PL / ME / M **N2**



844 BLK / CHR / WHT
SN / M **I**



104 BLK / BLK / WHT
C / C **I**



2071 WHT / PNK / GLD
PL / ME / M **N2**



217 WHT / BLK / GUM
APG / SL / M **I**

OVERVIEW

GIRLS NYC83 SHR 2239

GIRLS NYC83 VLC 2224

KIDS NYC83 3130

KIDS NYC83 VLC 3224

KIDS NYC83 SLM 4192



1949 BLU / BLK / PNK
APG / N / SHR **N** 2



1055 BLK / PNK / CYN
PL / SL / M **N** 2



2027 BLK / DOT / FADE
PL / SN / M **N** 1



2045 BLK / ORG / BLU
SB / SL / M **N** 1



1069 BLK / PNK / SIL
PL / SN / M **N** 1



2067 BLU / BLK / TEAL
L / SHR **N** 1



1056 BLU / PNK / WHT
PL / SL / M **N** 2



2028 BLK / GRN / SEA
L / SN / M **N** 1



2047 BLU / SIL / BLK
SN / SL / M **N** 1



2062 BLK / PNK / BLU
PL / SN / M **N** 1



2068 PNK / BLK / CHEETAH
L / SHR **N** 2



2069 PUR / BLK / GRN
PL / SN / M **N** 1



2029 BLK / LKE / WHT
PL / SN / M **N** 1



1803 GRV / RED / BLK
N / SL / M **N** 1



1939 GRN / PNK / PUR
PL / SN / M **N** 1



1067 WHT / CYN / PNK
PL / 3M / M **N** 1



2030 BLK / PUR / SEA
PL / SN / M **N** 1



2049 PUR / LME / CHR
SB / SN / M **N** 1



2063 WHT / BLU / CHEETAH
ME / SPL / M **N** 1



2031 GRV / LME / CYN
SB / PL / M **N** 1



2070 BLU / SIL / LME
PL / ME / M **N** 1



1593 ORG / BLK / CYN
PL / SN / M **N** 1



2071 WHT / PNK / GLD
PL / ME / M **N** 1



BTS13
MATERIAL
CODE LEGEND

3M - REFLECTIVE
AL - ACTION LEATHER
ANB - ACTION NUBUCK
PU-CL - PU COATED LEATHER
S - SUEDE
SAL - SYNTHETIC ACTION LEATHER

APG - ACTION PEBBLE GRAIN
BN - BALLISTIC NYLON
C - CANVAS
SAPG - SYNTHETIC ACTION PEBBLE GRAIN
SB - SANDBUCK
SL - SYNTHETIC LEATHER

D - DENIM
DB - DANBUCK
FGL - FULL GRAIN LEATHER
SLP - SYNTHETIC PATENT LEATHER
SN - SYNTHETIC NUBUCK
SS - SYNTHETIC SUEDE

L - LEATHER
M - MESH
ME - MIRACLE ENAMEL
T - TWILL
TPR - THERMAL PLASTIC RUBBER
TPU - THERMAL PLASTIC URETHANE

N - NUBUCK
NN - NOBEL NUBUCK
NY - NYLON
PGL - PIG LEATHER
PL - PATENT LEATHER
PS - PIG SUEDE



© 2012-2013 by Osiris Shoes. Osiris Shoes and Osiris logos are world wide trademarks. No part of this catalog may be reproduced in any form without written permission of Osiris Shoes. All images in this catalog have been reproduced with knowledge and prior consent of the artist concerned. Products in this catalog are subject to change. All products in this catalog may not be available in all countries.

5601 PALMER WAY CARLSBAD, CA 92010
Phone: 760.692.5040 // Fax: 760.692.5132 // OSIRISSHOES.COM